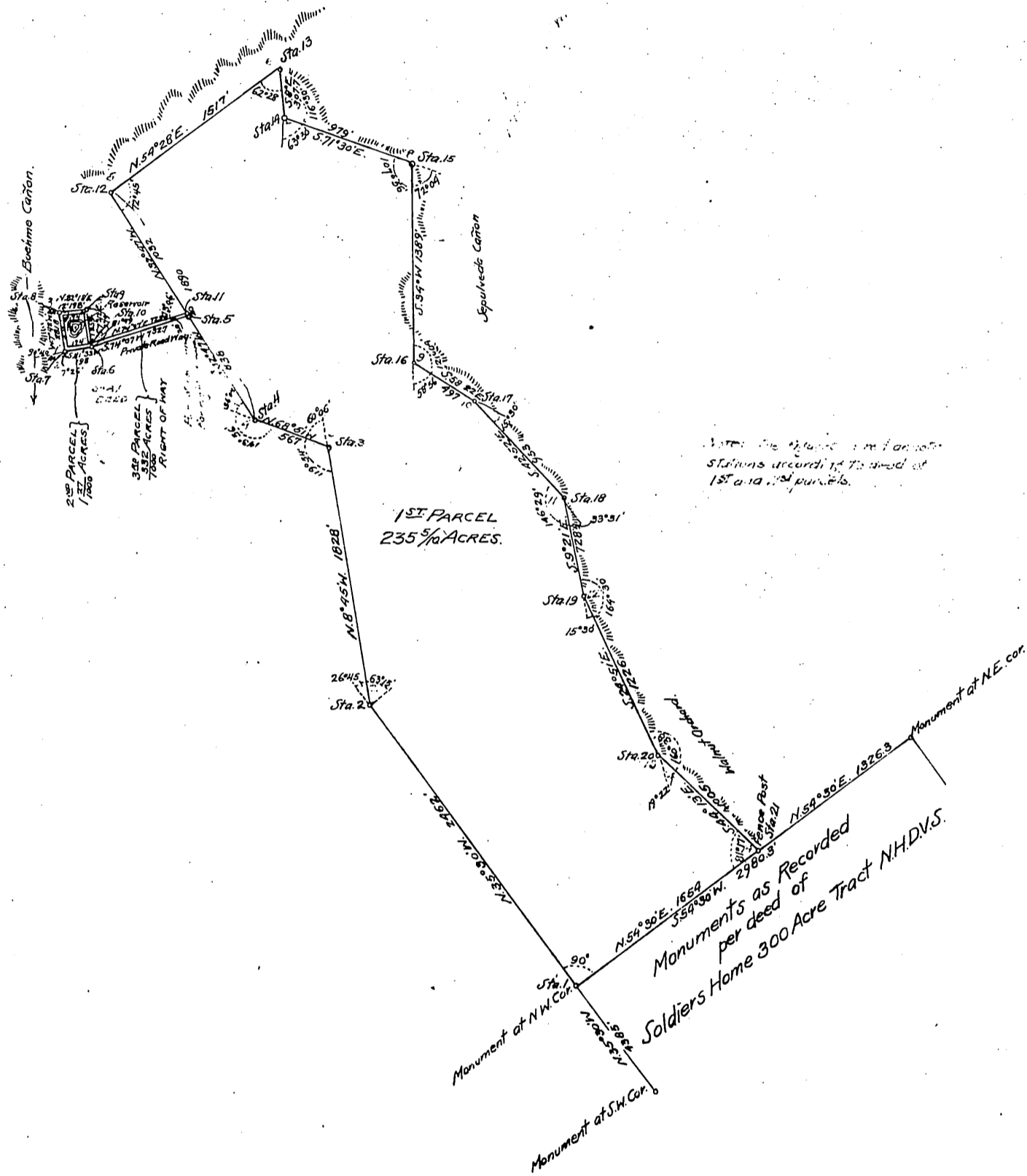


Plat
 Showing the survey of a tract of land
 situated in the
 Rancho San Vicente Y Santa Monica
 Los Angeles County State of California
 and northwesterly of the Soldier's Home 300 Acre Tract.
 Pacific Branch N.H. for D.V.S.

Surveyed May '99 at the request of Robt. F. and Roy Jones, Agents.
 By Thos. H. James, C.E. Licensed Surveyor.

Scale 1 inch = 4 chains.
 = 264 feet.
 (Scale reduced to 3000 feet to 1 inch).



Recorded June 5-1900.