

Plat  
 showing  
 the dividing line between the lots  
 of  
 A.O. Larkin and A.L. Bath  
 in  
 Block 14 Ords Survey  
 of the  
 City of Los Angeles, County of Los Angeles

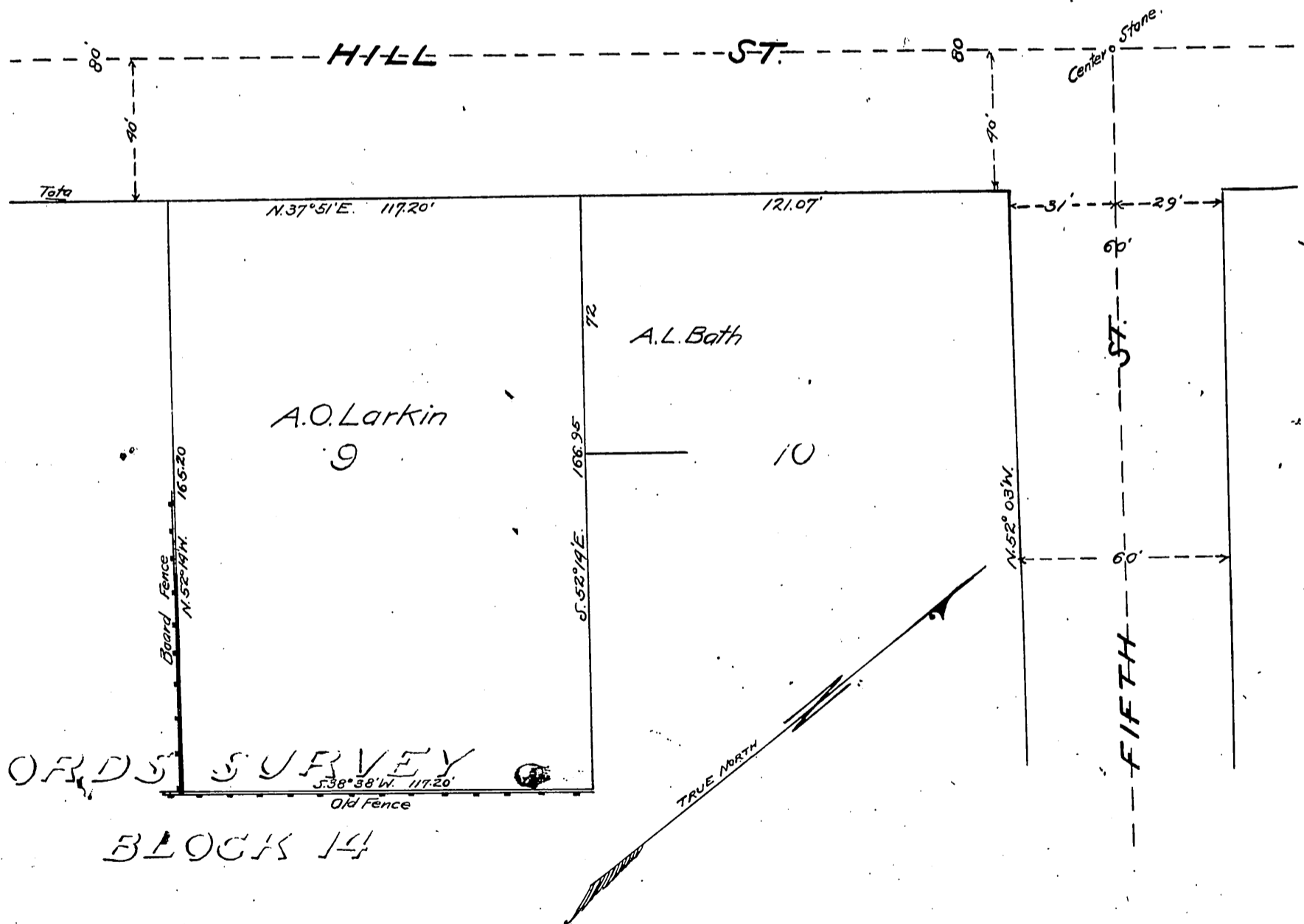
State of California

Surveyed in June 1900 by

V.J. Rowan, Surveyor.

Scale 30 feet to one inch.  
True Courses, Var. 14° 30' East.

(Scale reduced to 40 feet to 1 inch)



Recorded July 7-1900.