

DM 1389-179

179

MAP OF THE

LEFFINGWELL TRACT

as shown on

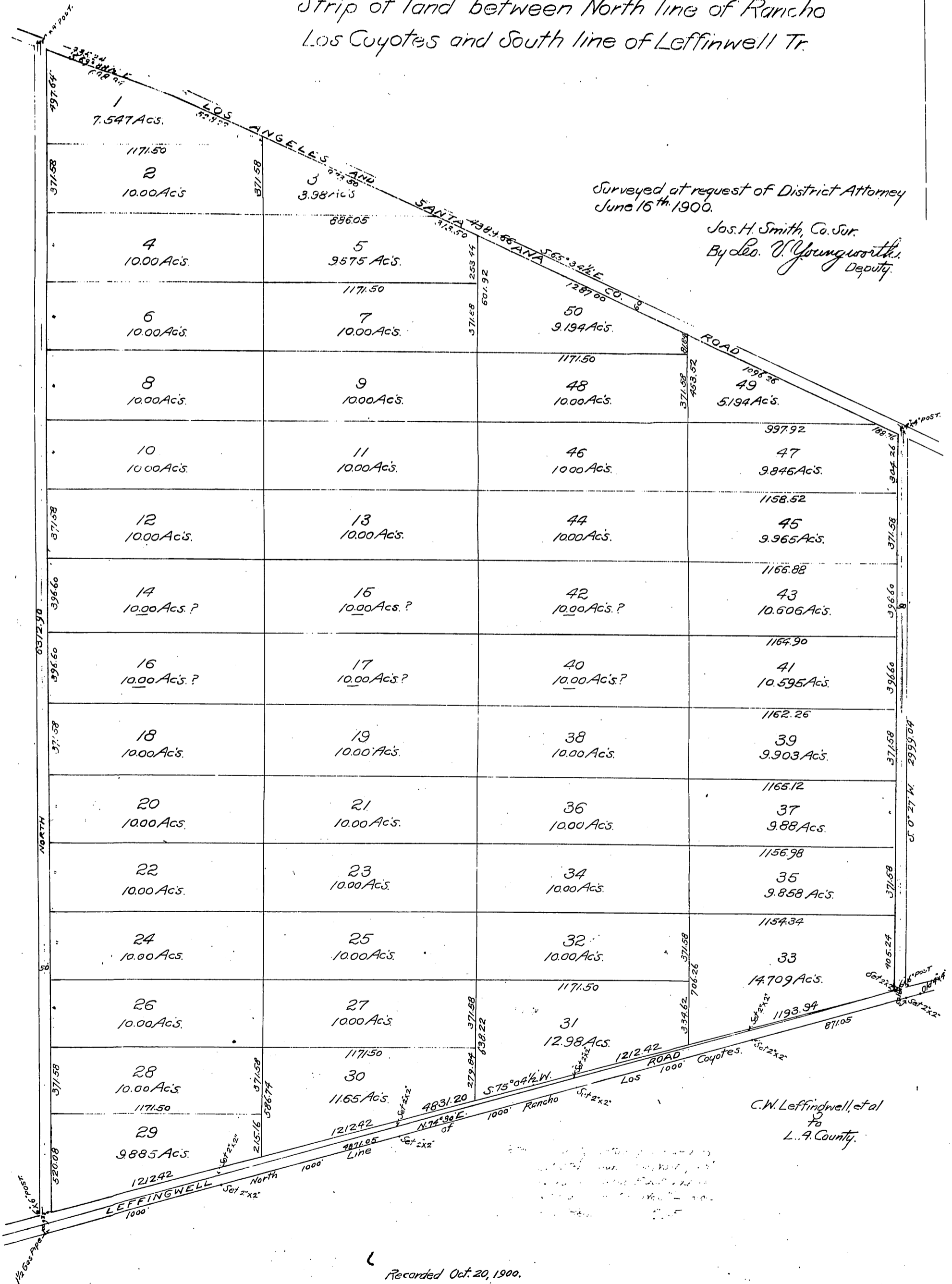
1 6

and

Strip of land between North line of Rancho Los Coyotes and South line of Leffingwell Tr.

Surveyed at request of District Attorney June 16th 1900.

Jos. H. Smith, Co. Sur.
By Leo. V. Youngworth, Deputy.



Recorded Oct. 20, 1900.