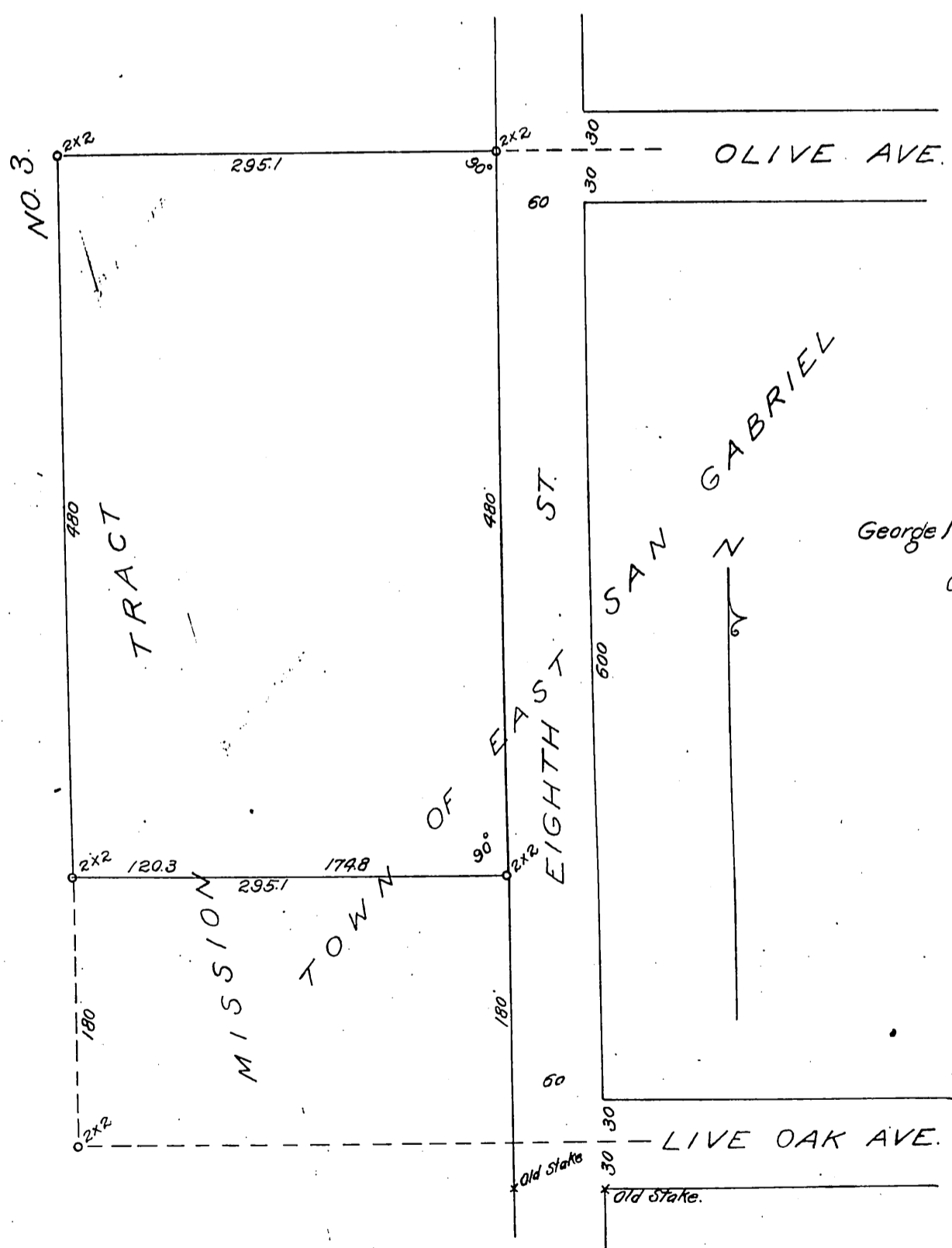


DM 1435-123

66

PLAT
 SHOWING LAND SURVEYED
 FOR
 O.W. LONGDEN
 JAN. 19, 1901.
 SCALE 100 FT. TO 1 INCH.
 BY T.D. ALLIN.



George Montgomery, Bishop, R.
 to
 O.W. Longden.

For Las Tunas Dr. see C.F. 1574

Recorded Feb. 13, 1901.