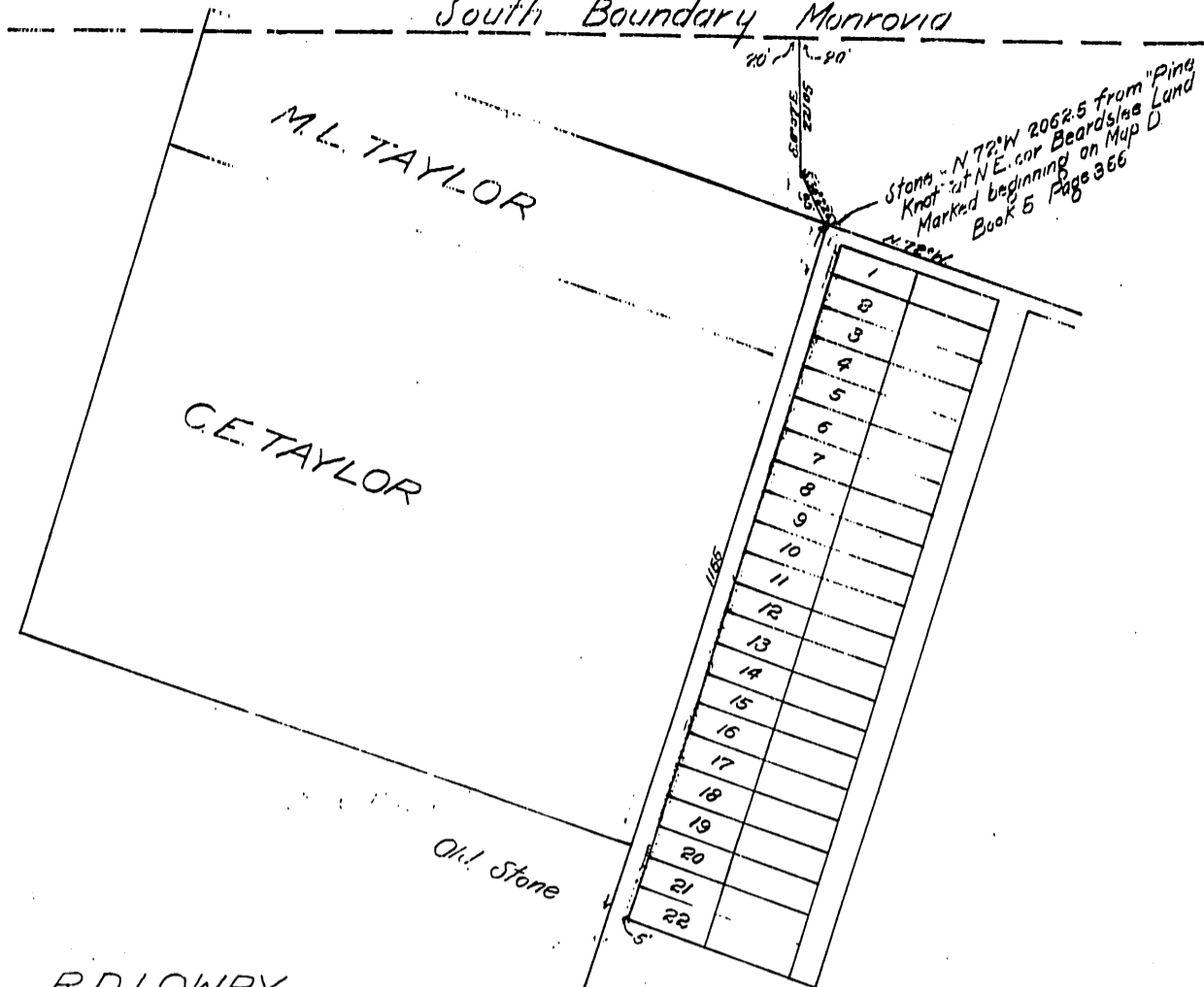


67

South Boundary Monrovia



Oil Stone

R.D. LOWRY



J.A. BAXTER

J.H. SHRODE

HEIRS OF L.L. BRADBURY

J.H. Shrode, et al.
to
L.A. County.

MAP OF CALIFORNIA AVE.

Scale 300' = 1" Var. 14° East.

NOTES.

Portion colored Blue deeded heretofore.
" " Red deeded by this deed.

Recorded Feb. 14, 1901.

Widening California Ave. D:29-43 Document 8679

3374
20' 20'