

DM 1444-320

74

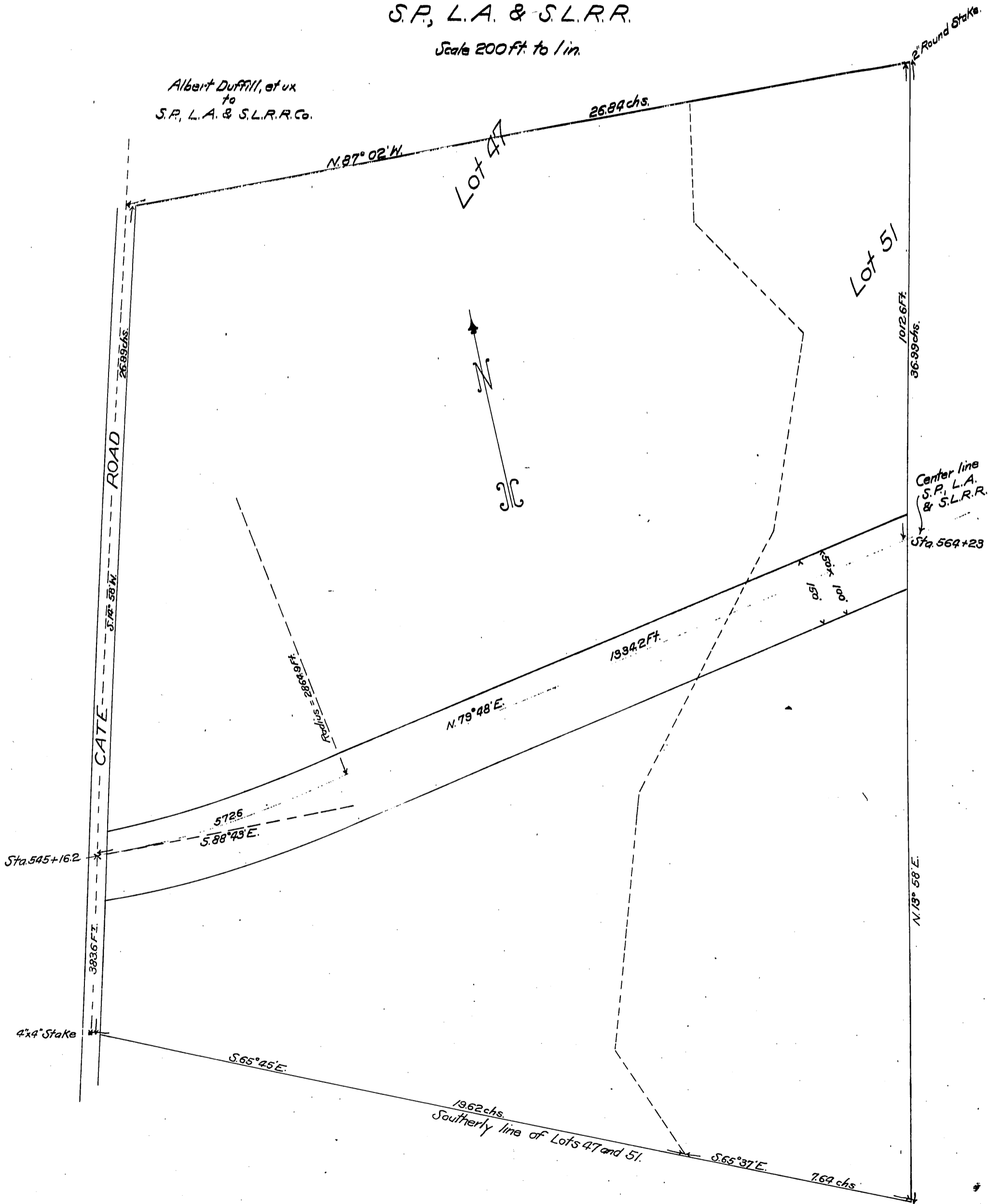
Map of a portion of Lots 47 and 51
Partition of Rancho Paso de Bartolo

showing
proposed right of way of the

S.P., L.A. & S.L.R.R.

Scale 200 ft. to 1 in.

Albert Duffill, et ux
to
S.P., L.A. & S.L.R.R. Co.



Recorded May 22, 1901