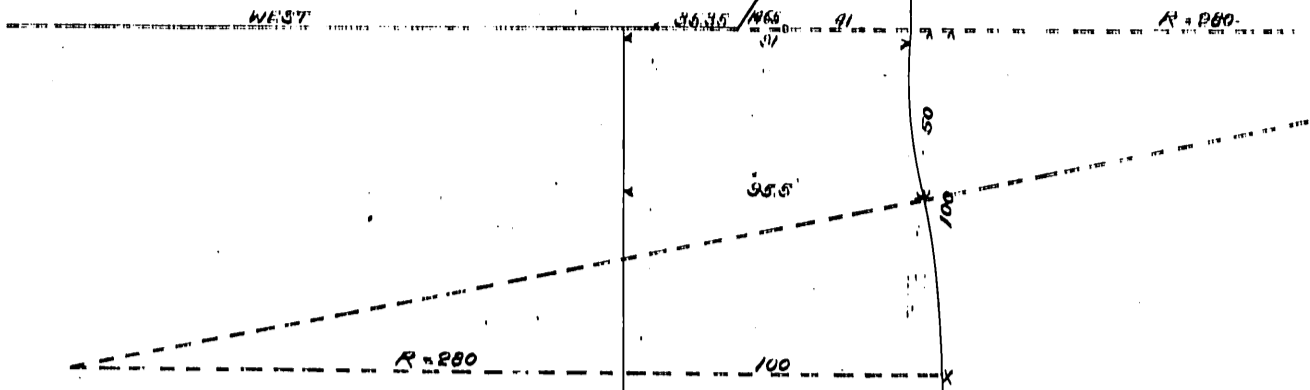


DM 1447-206

78

COLUMBIA ST

110'10" W
FAIR OAKS AVE



Walter L. Raymond, et ux
to
City of South Pasadena.

PLAT
SHOWING ADDITIONAL STRIPS
OF LAND
TO BE DEEDED
TO THE
CITY OF SOUTH PASADENA
FOR STREET PURPOSES.

SCALE 60 FT. TO 1 INCH.

SURVEYED
APRIL 26, 1901.

BY T.D. ALLIN.

Index #8

Recorded May 8, 1901.

