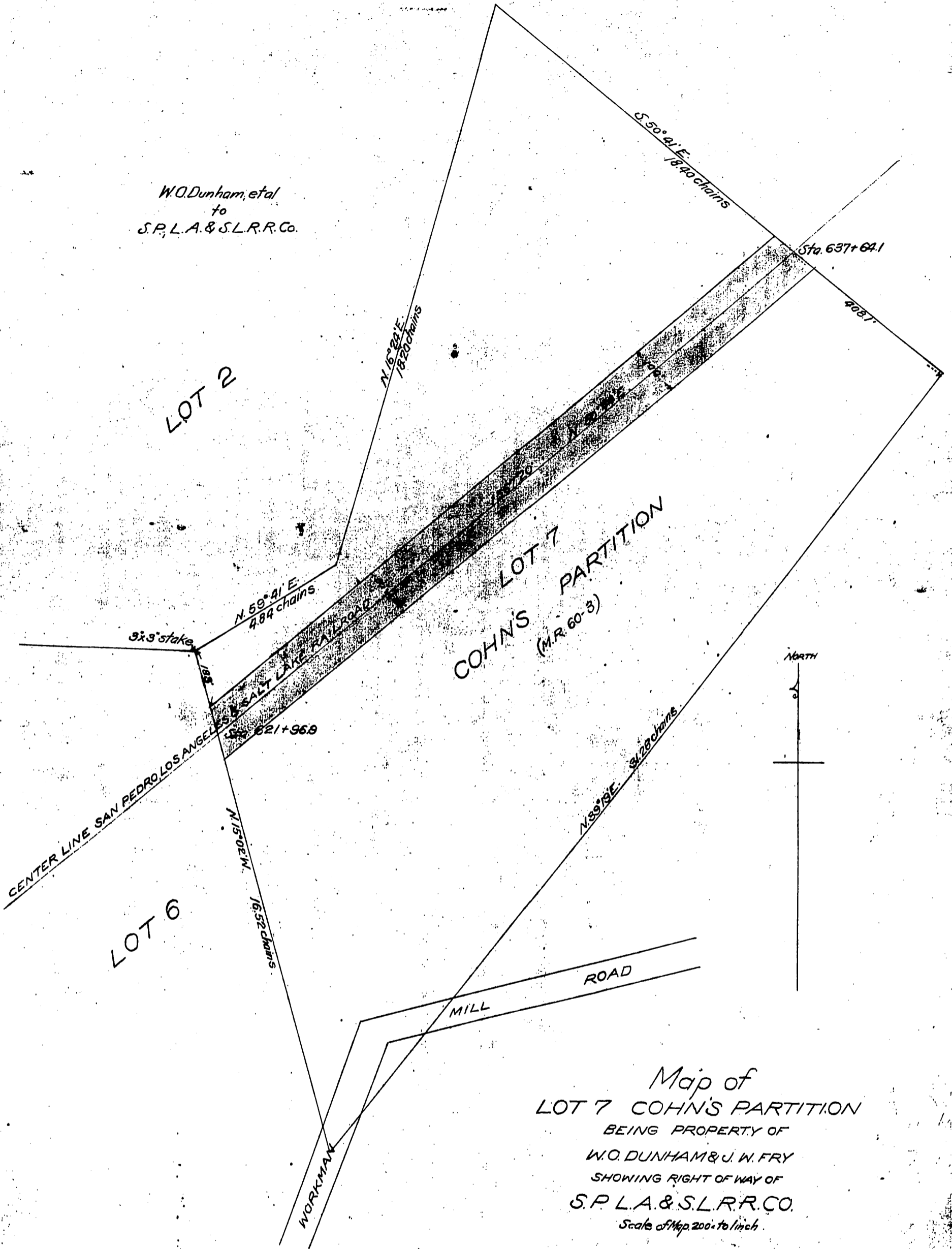


W.O. Dunham, et al
to
S.P.L.A. & S.L.R.R. Co.



Map of
 LOT 7 COHN'S PARTITION
 BEING PROPERTY OF
 W.O. DUNHAM & J. W. FRY
 SHOWING RIGHT OF WAY OF
 S.P.L.A. & S.L.R.R. CO.
 Scale of Map 200 = 1 inch

Recorded Jul. 15, 1901.