

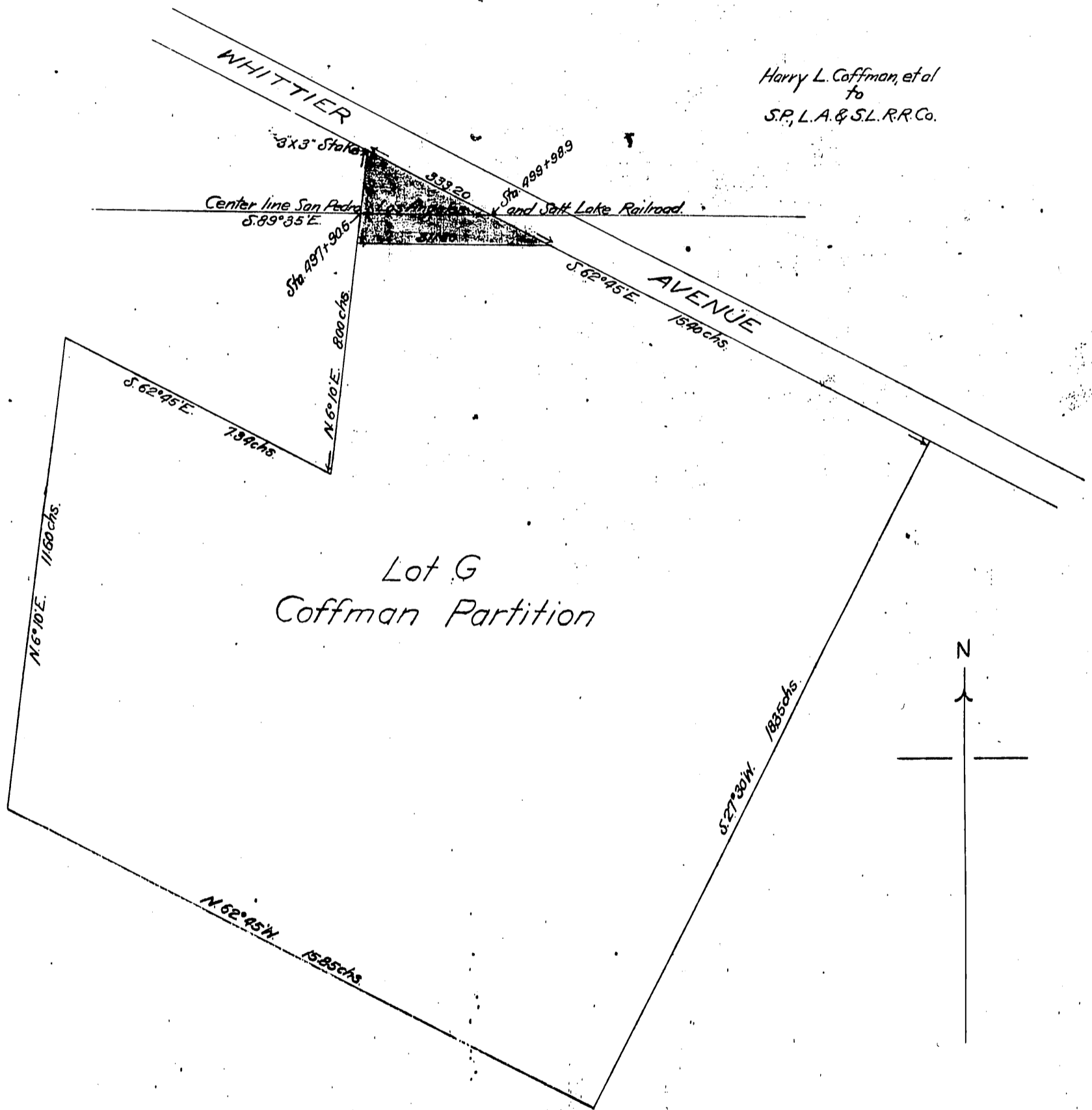
DM 1501-62

32

62

MAP
OF
Lot G, Coffman Partition
IN THE
RANCHO PASO DE BARTOLO
showing Right of Way of the
S.P.L.A. & S.L.R.R.
Scale 200 feet to 1 inch.

Harry L. Coffman, et al
to
S.P.L.A. & S.L.R.R. Co.



Recorded Oct. 14, 1901.

M. 21-100