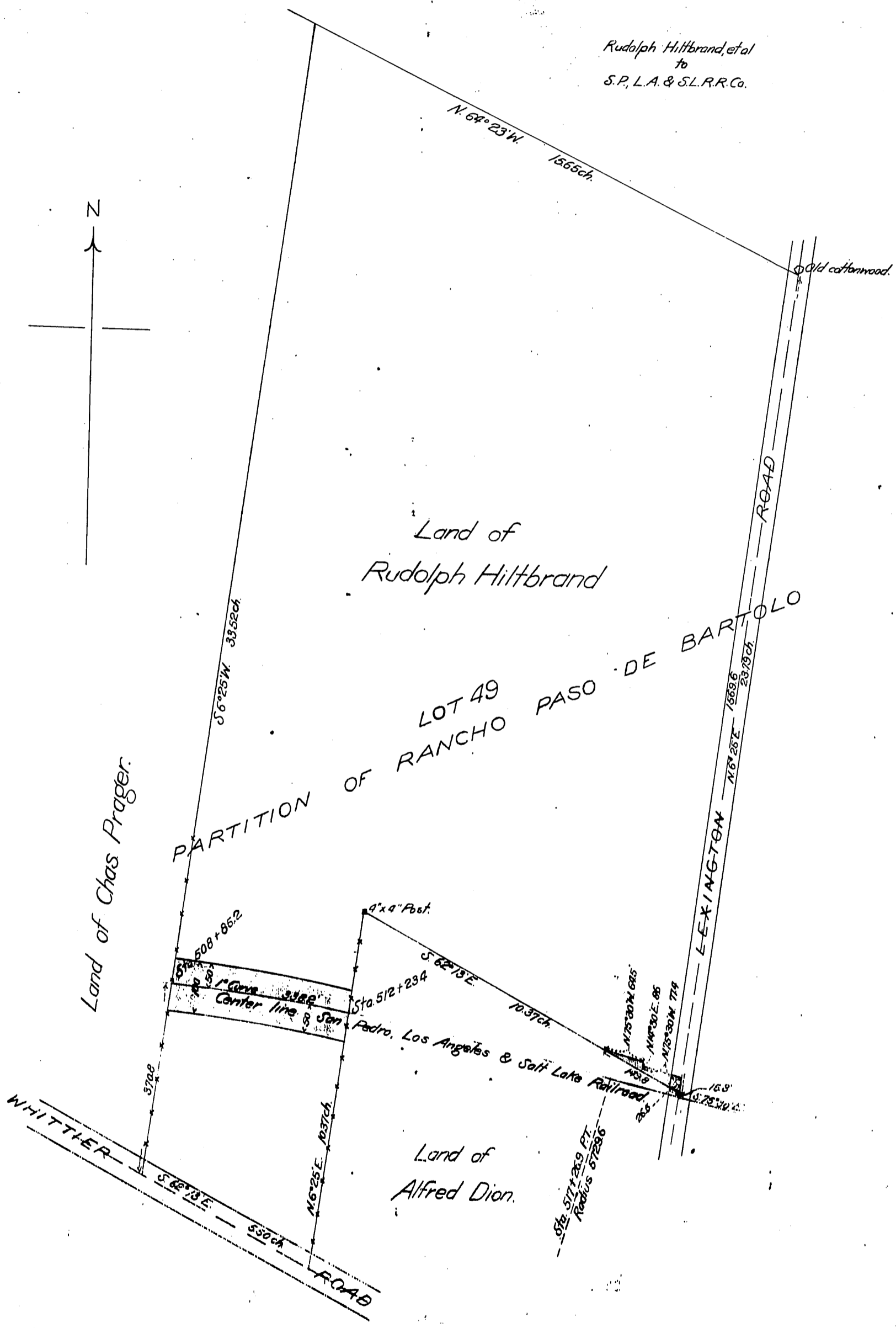
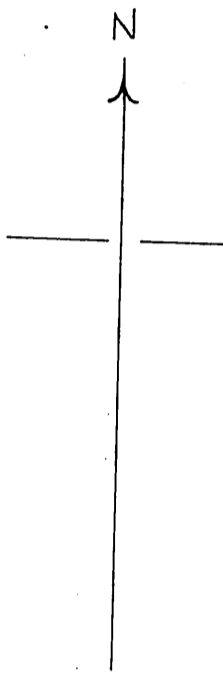


DM 1505-15  
35

Map of  
Part of Lot 49 of the Partition of the Rancho Paso de Bartolo  
Being the property of Rudolph Hiltbrand  
showing Right of Way of the  
SAN PEDRO, LOS ANGELES & SALT LAKE RAILROAD COMPANY  
Scale 200 feet to 1 inch.

Rudolph Hiltbrand, et al  
to  
S.P., L.A. & S.L.R.R. Co.



Recorded Oct 19, 1901

1505-15