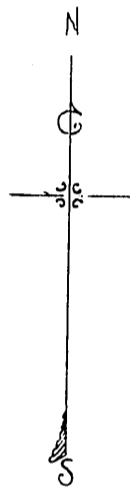


DM 1593-80

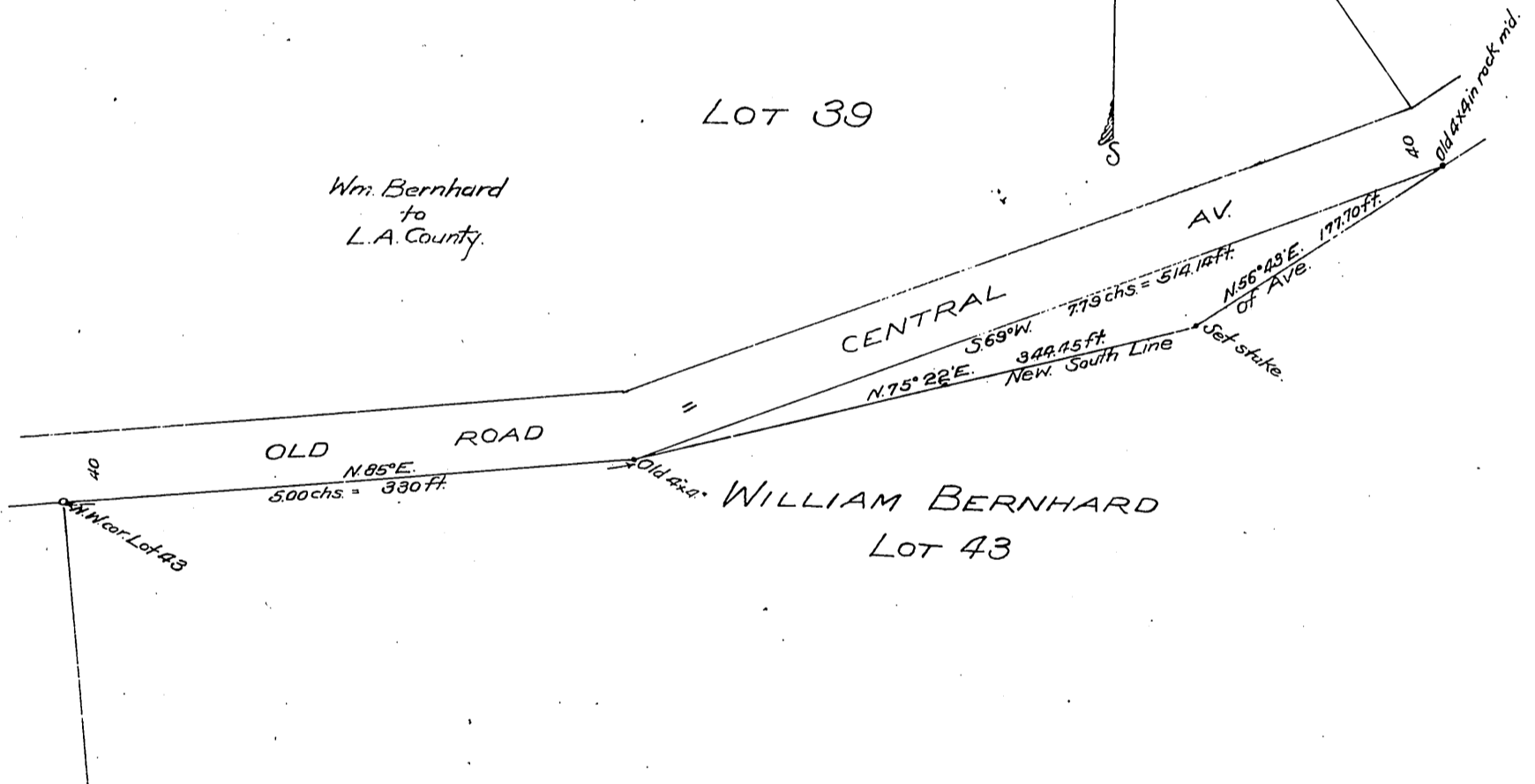
23

MAP
 showing widening of
 CENTRAL AVE.
 on N. side of part of Lot 43
 of the west portion of
 Tujunga Ranch.
 Jos. H. Smith - Co. Sur.
 Jan. 14, 1902.
 Scale 100ft. = 1in.



LOT 39

Wm. Bernhard
 to
 L.A. County.



Recorded May 27, 1902.

Sheet 8 of 13

D-1593