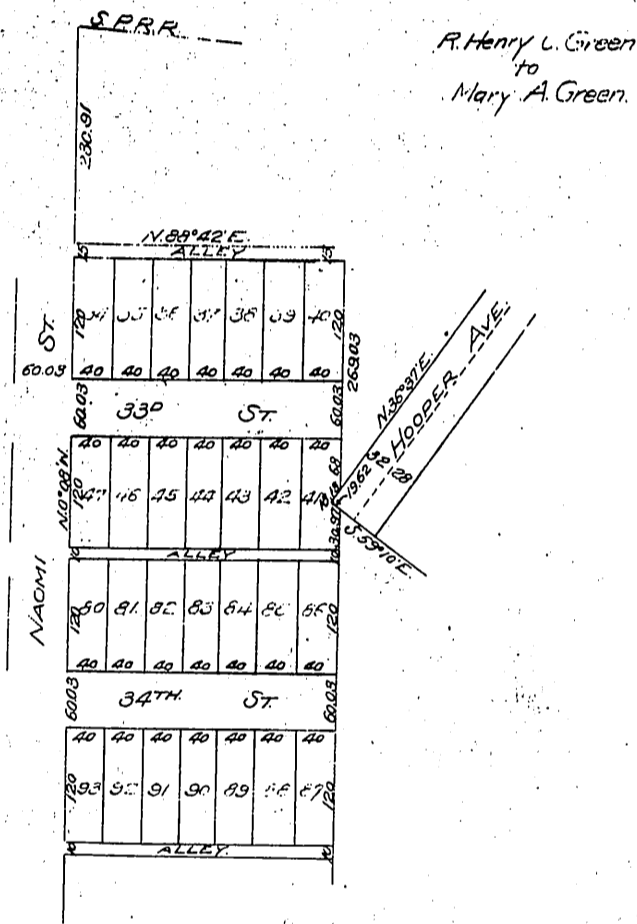


DM 1613-61

37

PLAT
of a portion of
Green's Central Avenue Tract



R. Henry L. Green
to
Mary A. Green.

Deed for Alley on south D: 3837-41 D: 11-247
See s.c.c. 61365 for Alley on north D: 20-131
33rd St. for decree see D: 22-198 D: 3800-181
Alley south of 33rd St. " " D: 22-199 D: 3831-18.
34th St. " " D: 22-198 D: 3811-129

Recorded July 1, 1902.

Sheet 67