

DM 1632-136

49

Map of

KESSLER STANCHFIELD & CO'S SUB

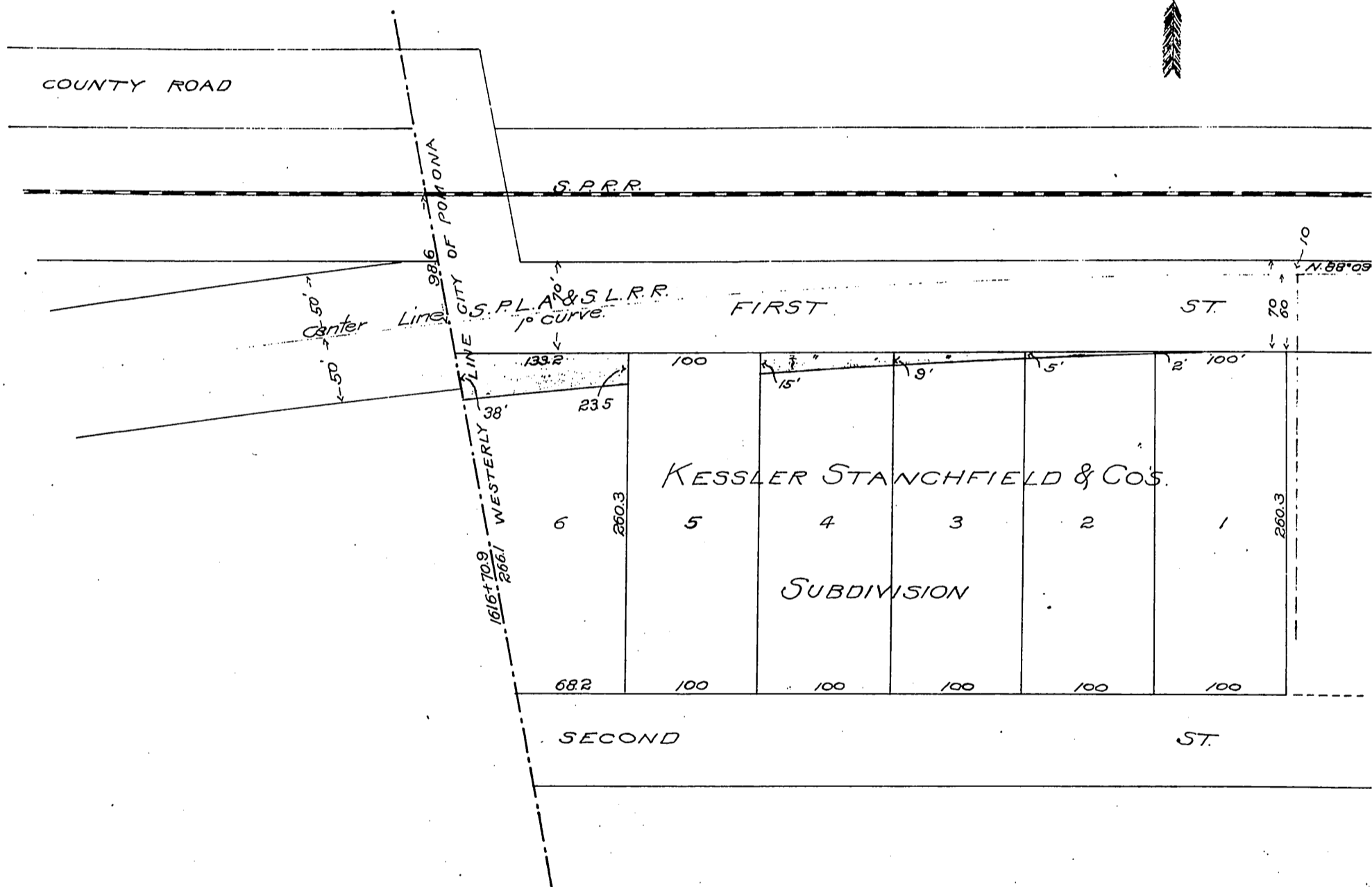
±IN±

City of Pomona Cal.

Showing property sought to be acquired by the  
S.P.L.A. & S.L.R.R. CO.

Scale 100'-1in.

Robt. D. Simpson to  
S.P.L.A. & S.L.R.R.



Recorded Sep. 13, 1902

M. 5-113

D:1632

A. 111