

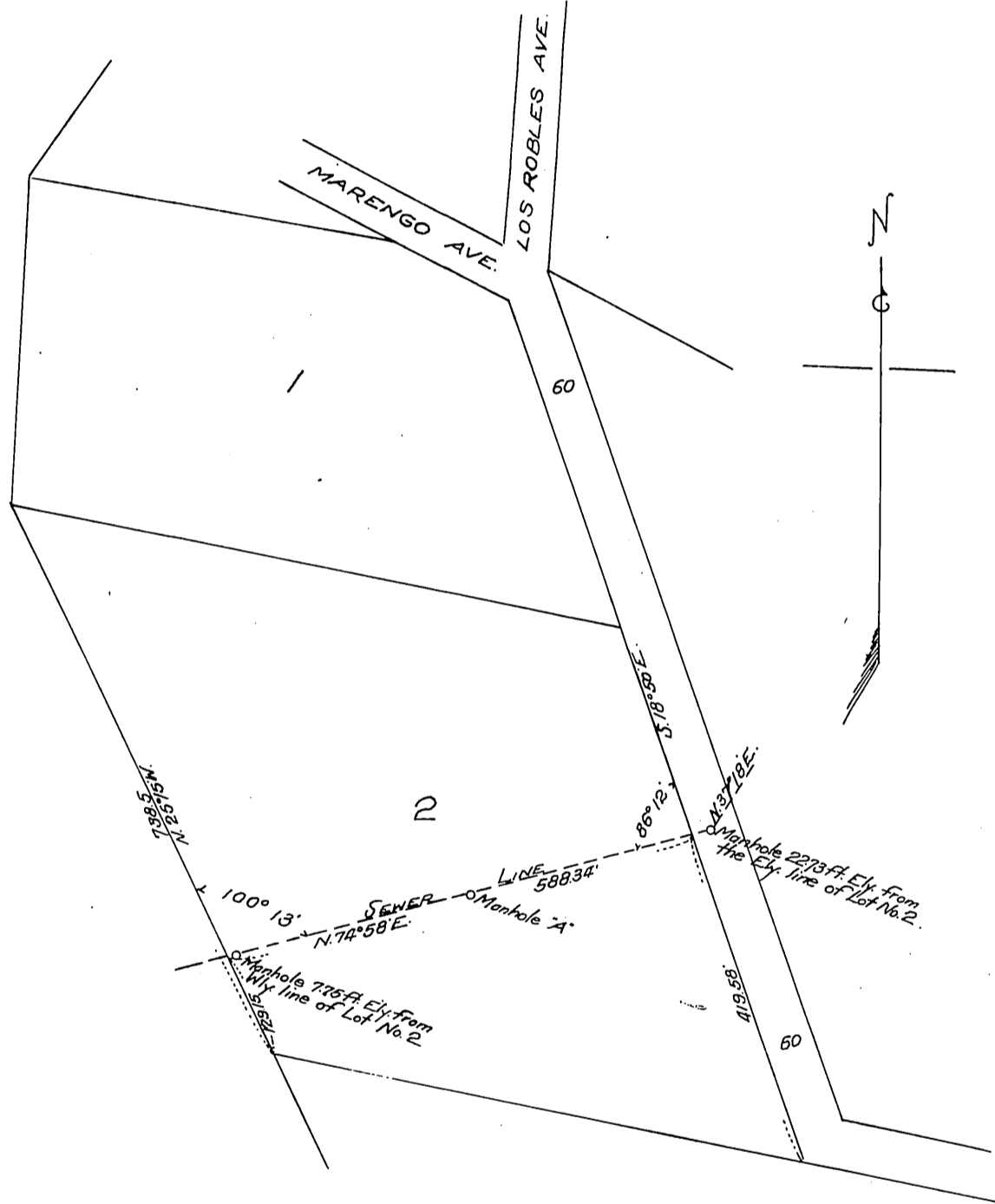
DM 1643-159

54

MAP

Showing Sewer Right of Way
across Lot No. 2 of Los Robles Rancho as
recorded in Book 42 page 83 Misc. Records.
Map is to accompany deed from Mary A. Pollard
to the City of Pasadena. Scale 1 in. = 200 feet.
Pasadena, Cal. August 1902.

T.D. Allin, City Engineer.



Recorded Sept. 30, 1902.