

DM 1645-134

55

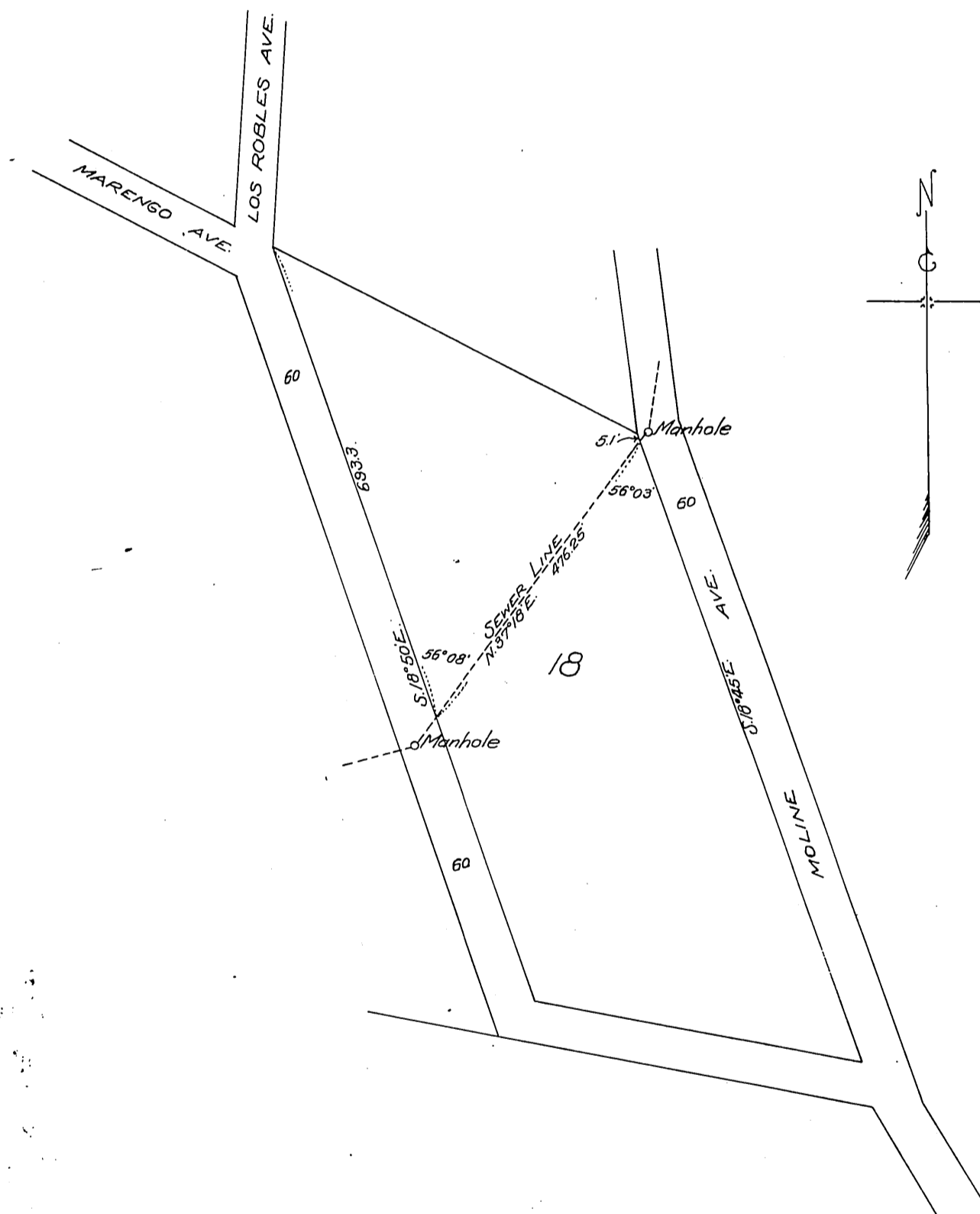
MAP

Showing Sewer Right of Way  
across Lot No. 18 of Los Robles Rancho as  
recorded in Book 42, Page 83, Misc. Records.  
Map is to accompany deed from Eusebius  
Pollard to the City of Pasadena.

Scale 1 in. = 200 feet

Pasadena, Cal.  
August, 1902.

T. D. Allin,  
City Engineer.



Recorded Sept. 30, 1902.