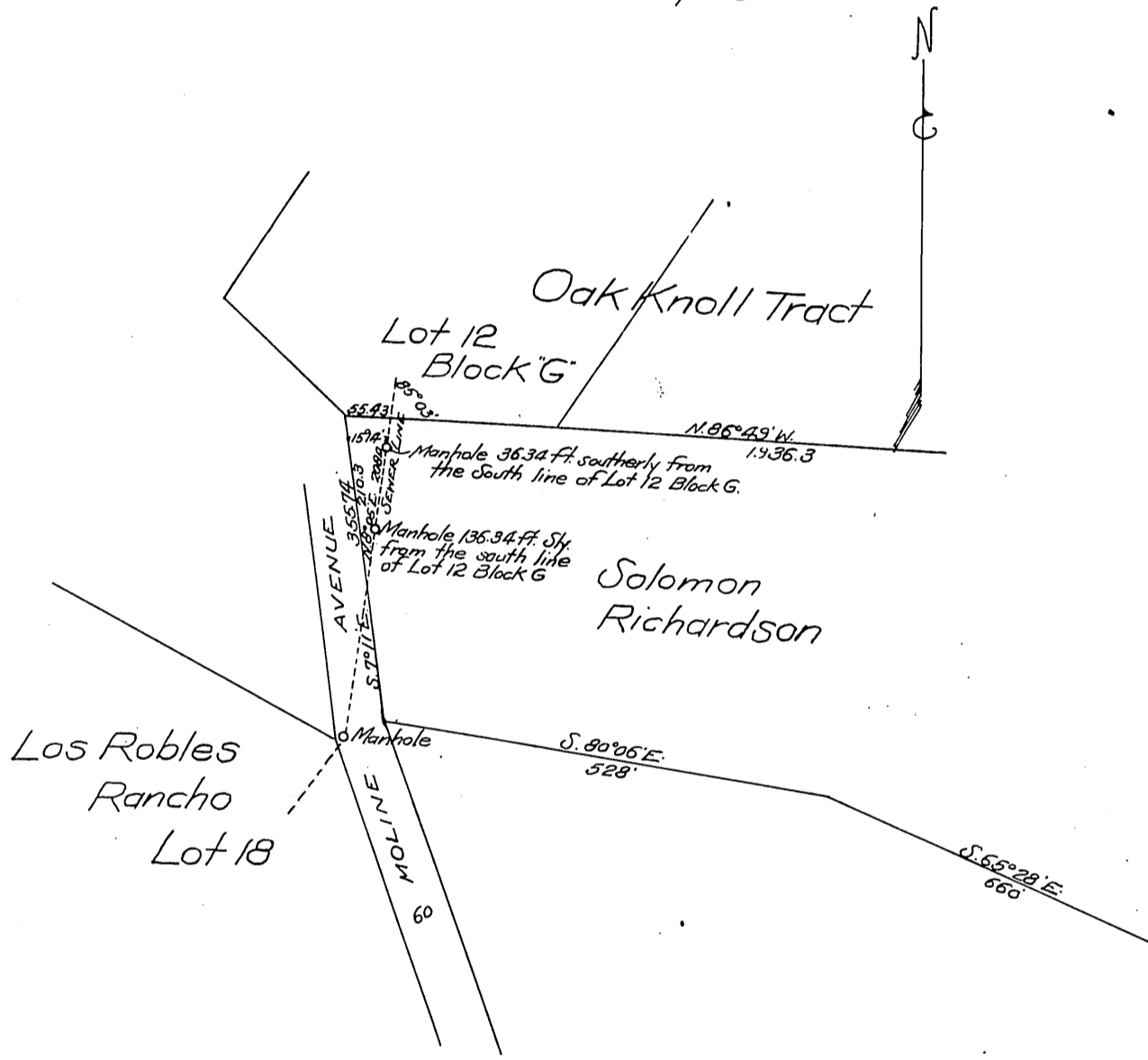


DM 1652-129

56

Map showing
 Sewer Right of Way
 across property of Solomon Richardson.
 Map to accompany deed from Solomon
 Richardson to the City of Pasadena.
 Scale 1 in. = 200 feet.
 Pasadena, Cal.
 August 1892

T.D. Allin.
 City Engineer.



Recorded Sept. 30, 1902.