

DM 1687-60

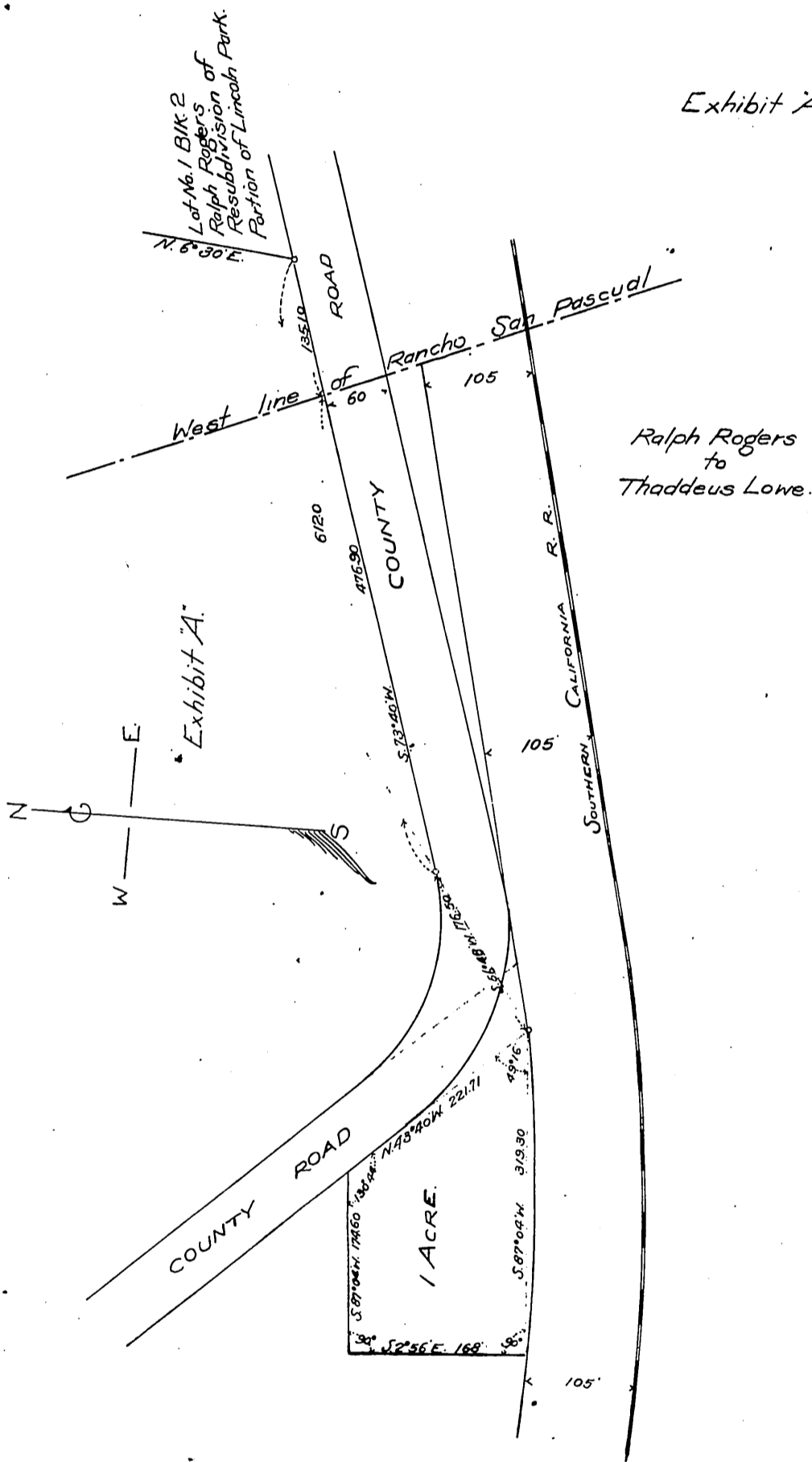
62

MAP

of one acre of land showing connection with S.W. corner of Lot No. 1 BIK 2 Ralph Rogers Resub. of a portion of Lincoln Park as recorded in BK. 24, p. 19 Misc. Records.

John A. Morton, C.E.

Exhibit A.



Recorded Oct. 18, 1902
(Scale reduced to 150 ft. to 1 inch)

Sheet 7 A-74 View Lot 1 of Mineral Park Tract