

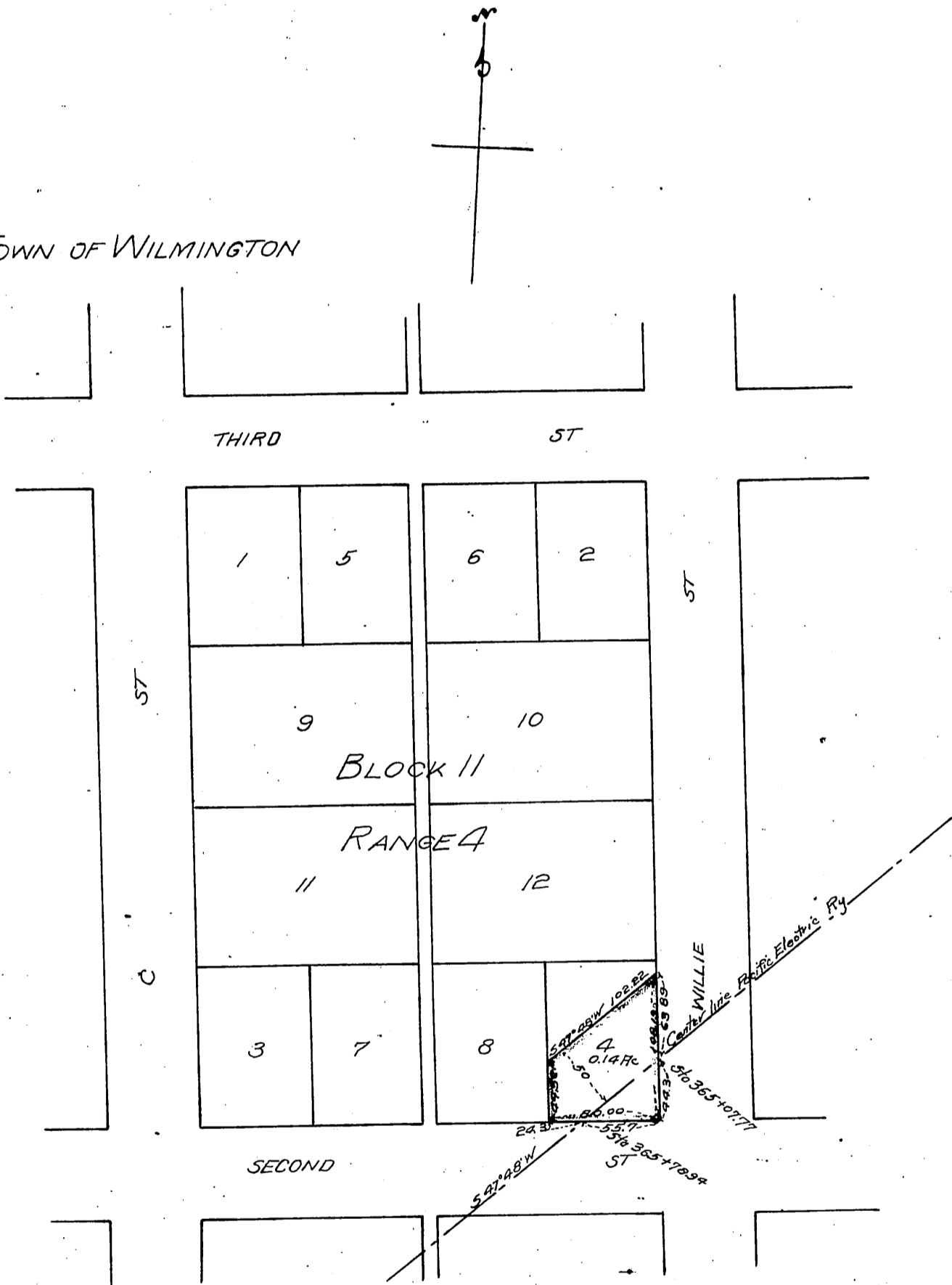
50

5513
A 105

Eleanor Martin.
 Peter D. Martin.
 by Walter S. Martin, his
 attorney in fact.
 Walter S. Martin.
 Genevieve Riley.
 J. Downey Harvey.

} to Pacific Electric Railway Company

TOWN OF WILMINGTON



Scale 100' to One Inch

Plat A

Recorded Aug 8 1903