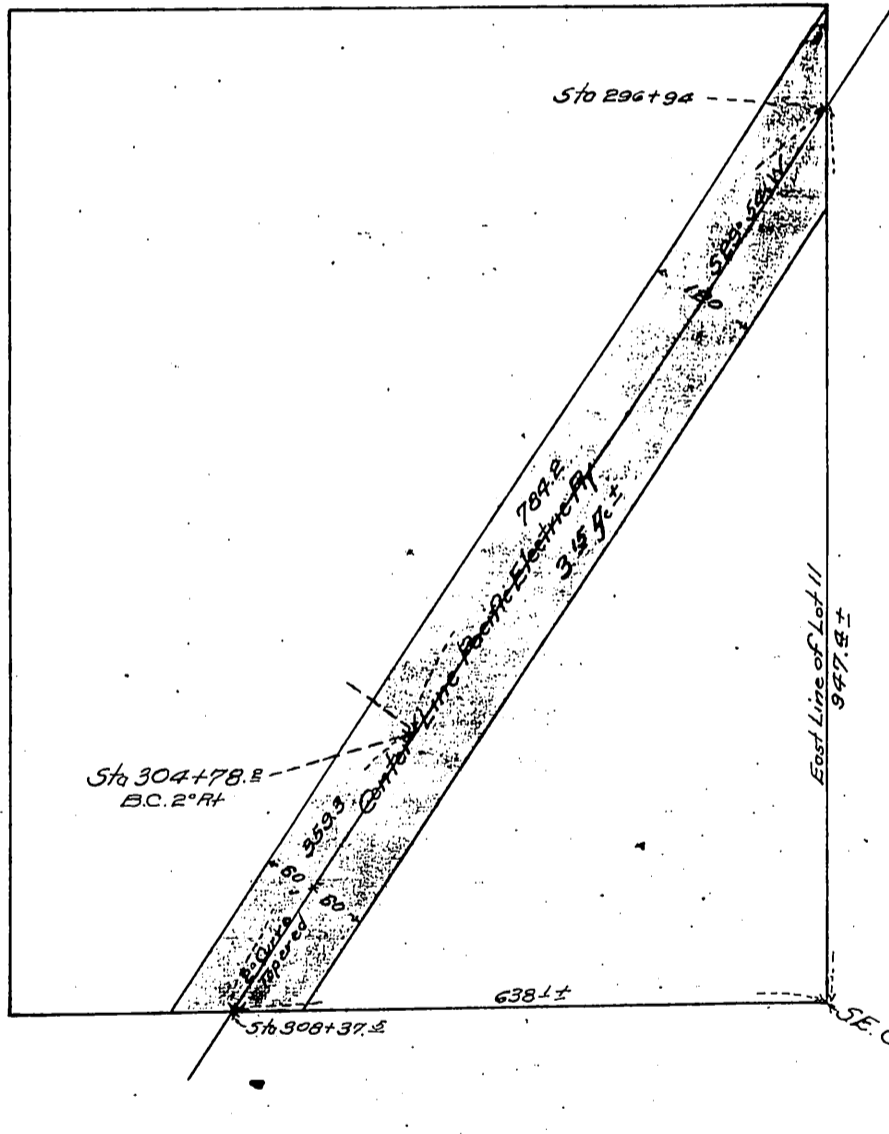


4513
A105

Lucy Laubersheimer, as
 Executrix of the Estate of
 Anton Laubersheimer, deceased.
 Lucy Laubersheimer.
 D.H. Laubersheimer.
 Lillian L. Laubersheimer Carey.
 Alina J. Laubersheimer Downing.
 Grace Laubersheimer Hillman.
 Geo. A. Laubersheimer.

} to Pacific Electric Railway Company.



Recorded Aug 8 1903