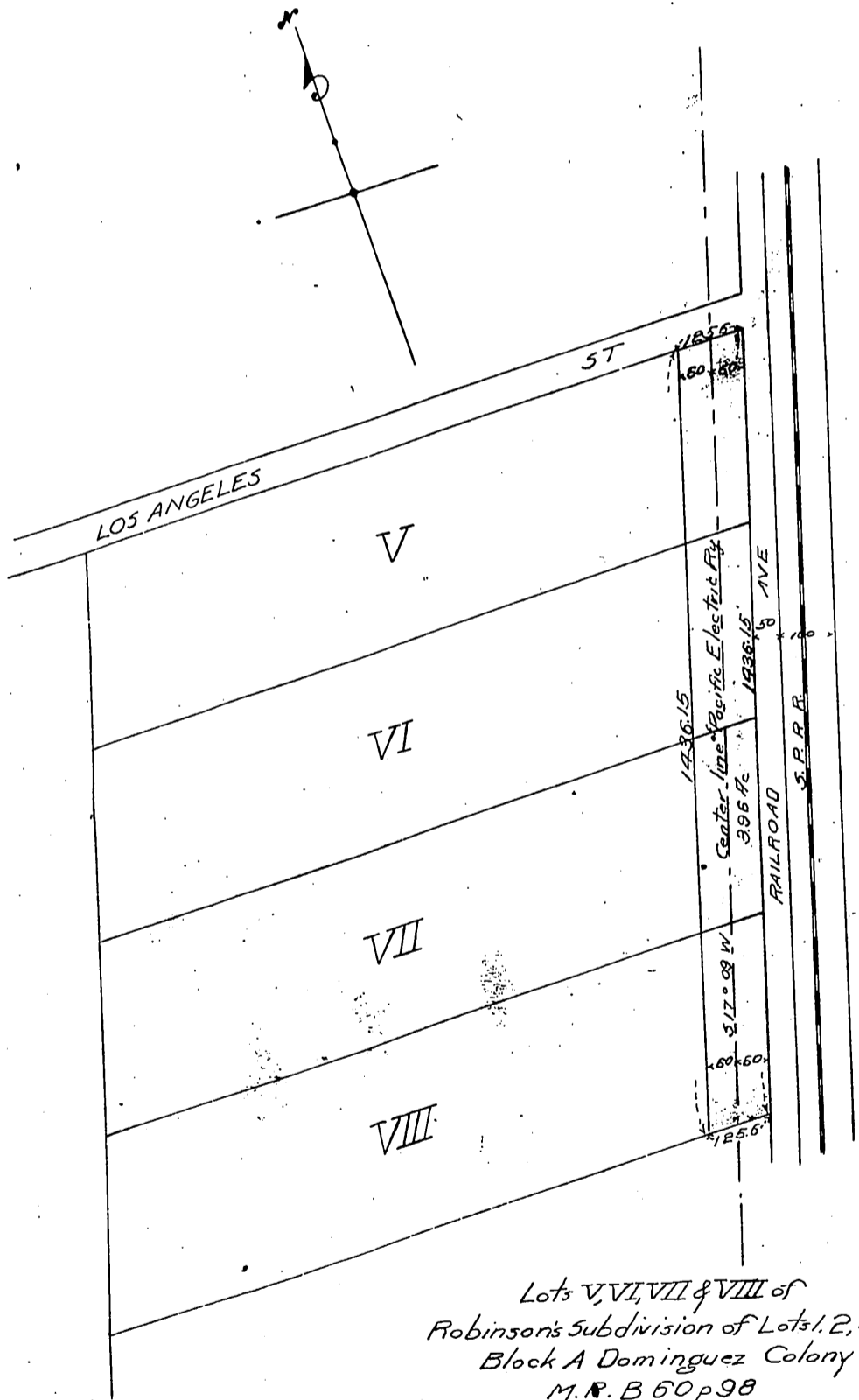


DM 1824-313

60

4
14

Jesus Cruz
Parseborscune Cruz
to
Pacific Electric Railway Company



see also
D.M. 1832-243

Lots V, VI, VII & VIII of
Robinson's Subdivision of Lots 1, 2, 5 & 6
Block A Dominguez Colony Tract
M. R. B 60 p 98
Scale 300' to One Inch

Railroad Ave changed to Alameda St. D. 13-92

18-30

Recorded Aug 8 1903

5/7 80