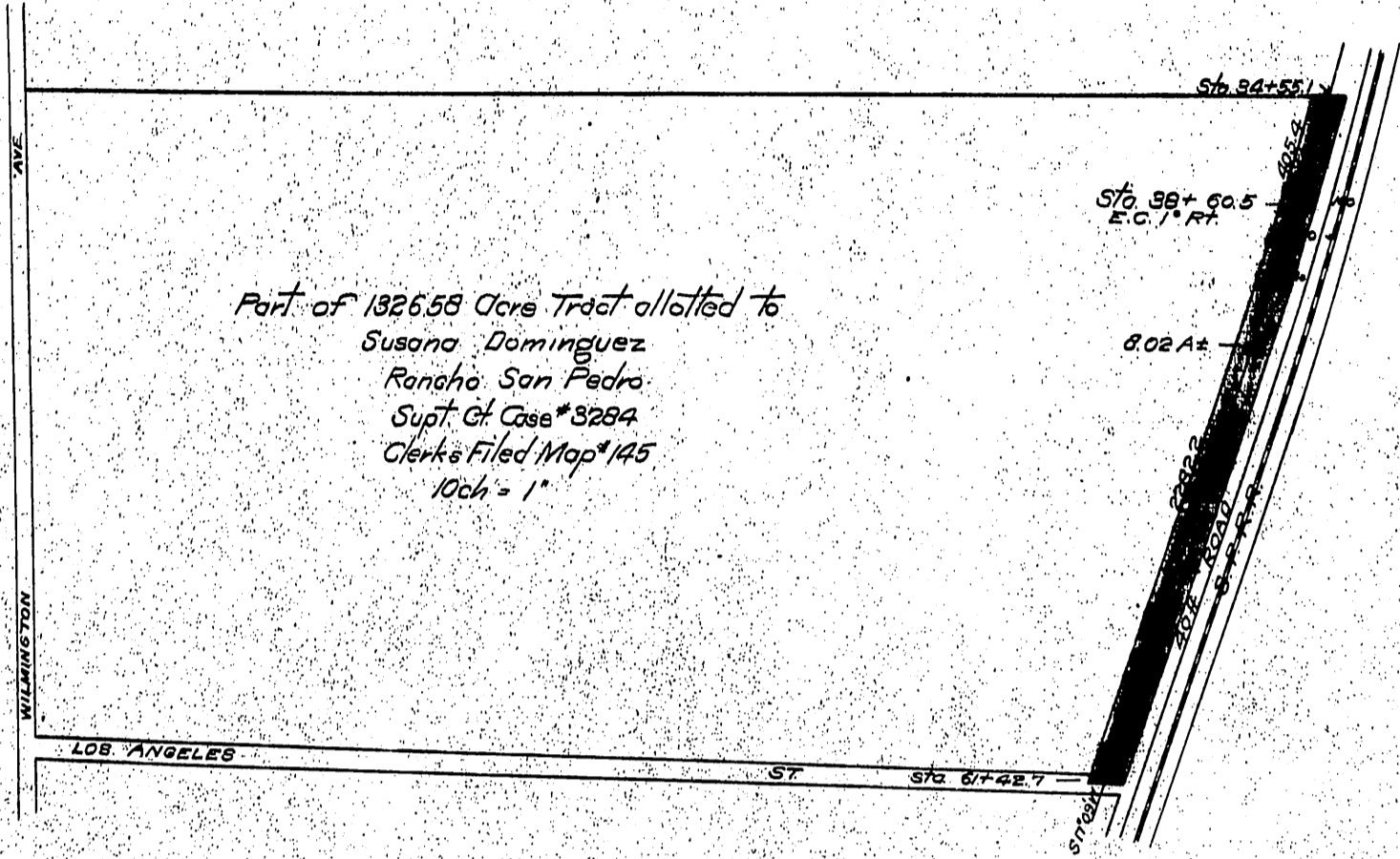


Gregorio Del Armo
&
Susana Dominguez De Del Armo
-to-
Pacific Electric Railway Co.

73

4812
A
A

Plat A



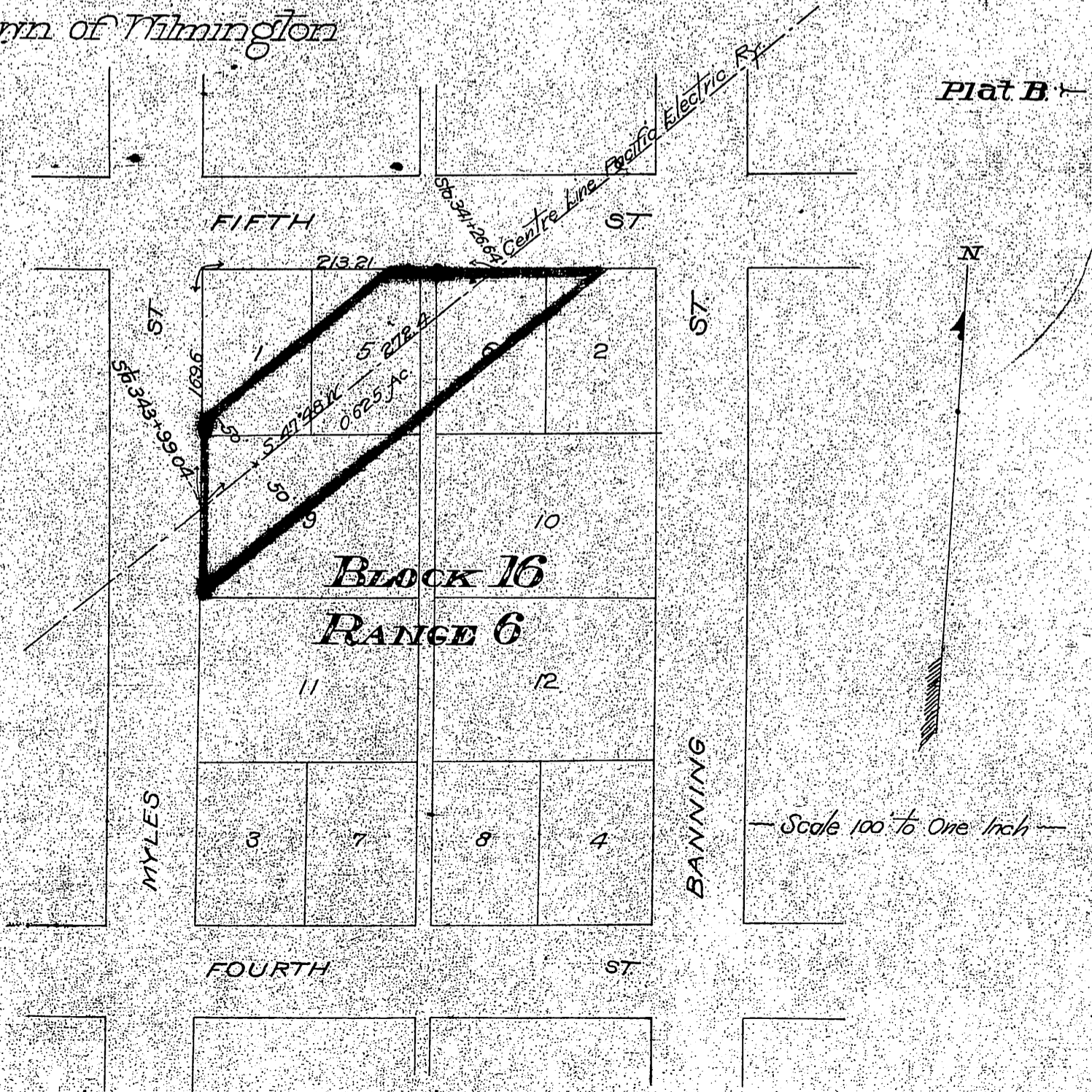
Part of 1326.58 Acre Tract allotted to
Susana Dominguez
Rancho San Pedro
Supt. Ct Case #3284
Clerks Filed Map #145
10ch = 1"

Port of P.E. R/W for Highway purp. D: 42-58 O.R. 4208-59

Sta 30

Town of Wilmington

Plat B



Scale 100' to One Inch

Comp
Map