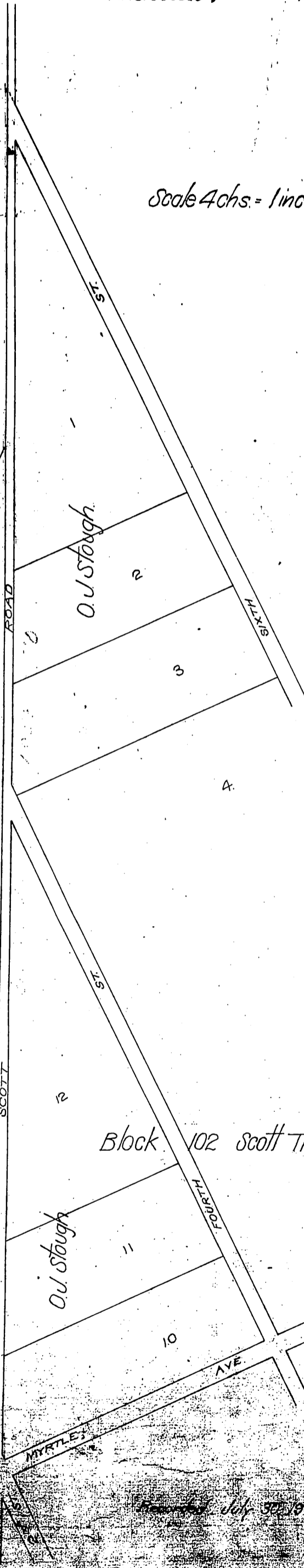


2

s.w. white } to County of Los Angeles
A. Brosseau

Scale 4chs. = 1inch.

Henry M. Fisher



Frac. Sec. 2. T. 1. N. R. 14. W.

A. Brosseau

Block 102 Scott Tr. (MISC. REC. 43-58)

Scale reduced to 6chs. = 1inch.

Frac. Sec. 11.

s.w. white

Recorded July 30, 1903