

1935-185

4

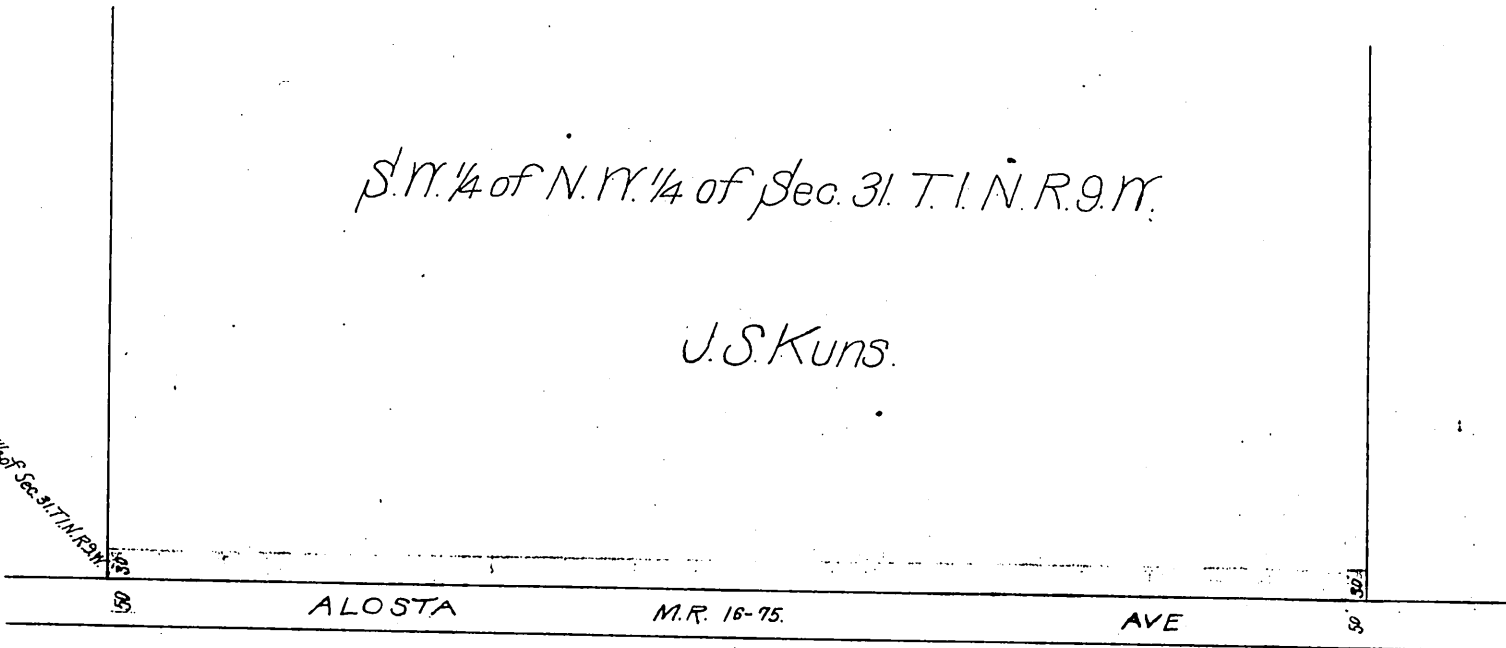
J.S. Kuns
to
County of Los Angeles

S.M. 1
[N.Y.]

S.W. 1/4 of N.W. 1/4 of Sec. 31, T.1, N.R.9.W.

J.S. Kuns.

S.W. 1/4 of the N.W. 1/4 of Sec. 31, T.1, N.R.9.W.



1935-185

Recorded Dec 14 1903.