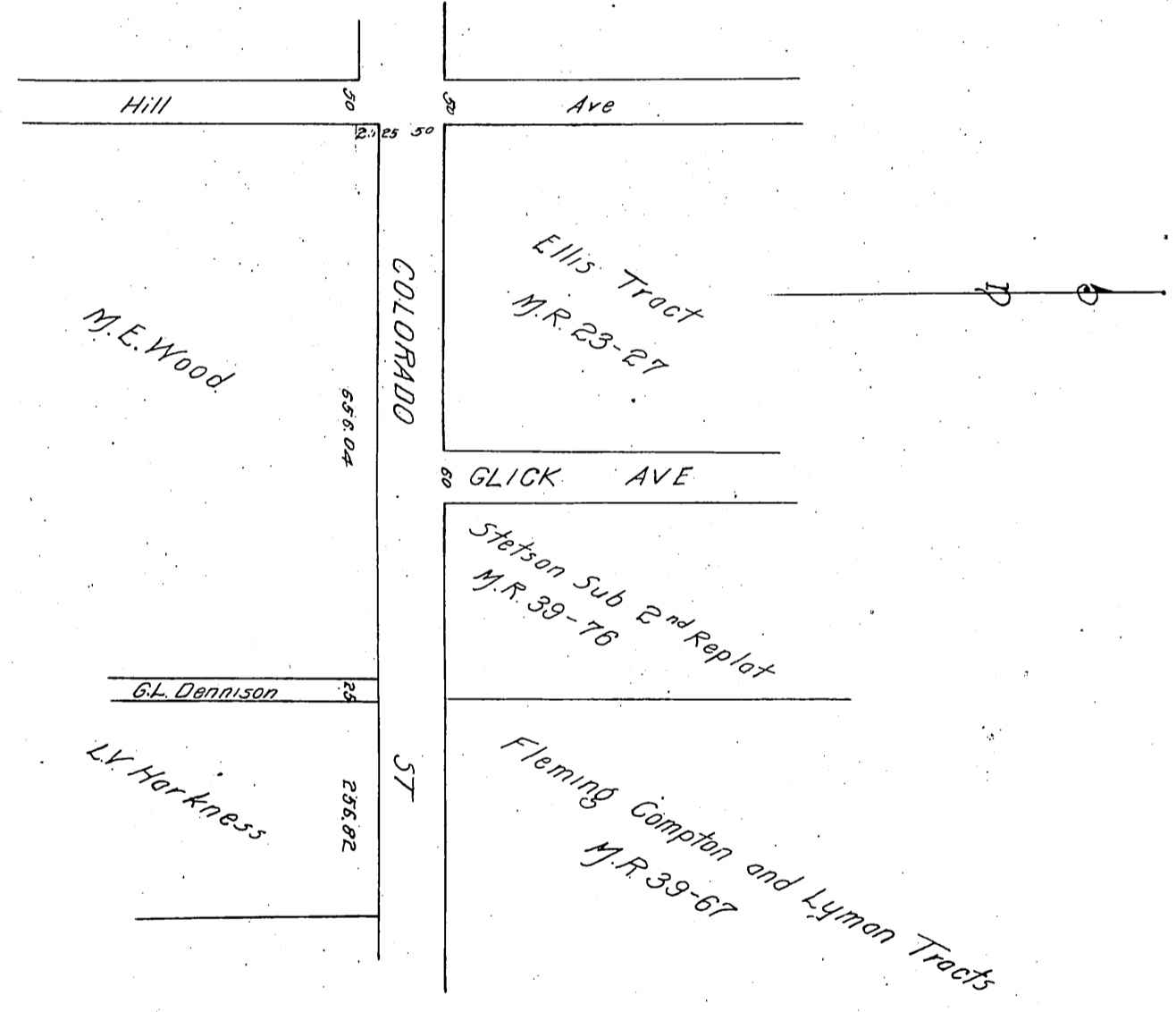


2137  
1/11/6  
A-65

Alexander M<sup>c</sup>Donald.  
 Mary O. Thompson.  
 Elias A. Bonine.  
 Isaac M<sup>c</sup>Callum.  
 Francisco Haslop.  
 Los Angeles Land Company.  
 By H.E. Huntington. President.  
 By E.T. Cook. Secretary.  
 William M. Hiatt.

} to County of Los Angeles.



See 1137.9