

DM 1951-101

101

James A. Hutchings } to County of Los Angeles.  
Maggie M. Hutchings }

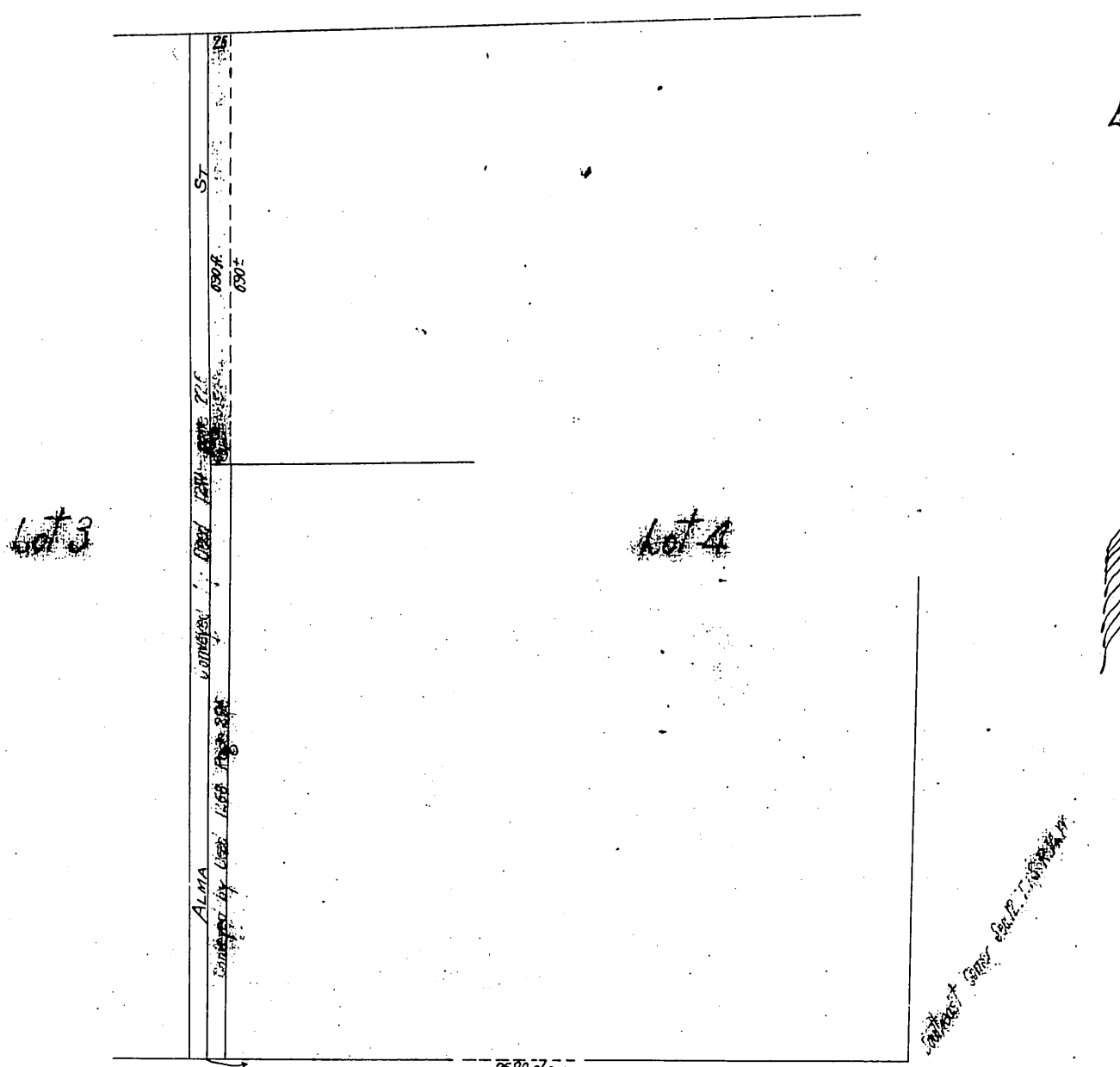
39

5/11

12

17

Plot  
Showing part Lot 3 Sec. 12 T. 1 S. R. 14 W.  
Los Angeles Co. Cal.



Recorded Jan. 2, 1904.

Sec. 11.3-137

City of Los Angeles