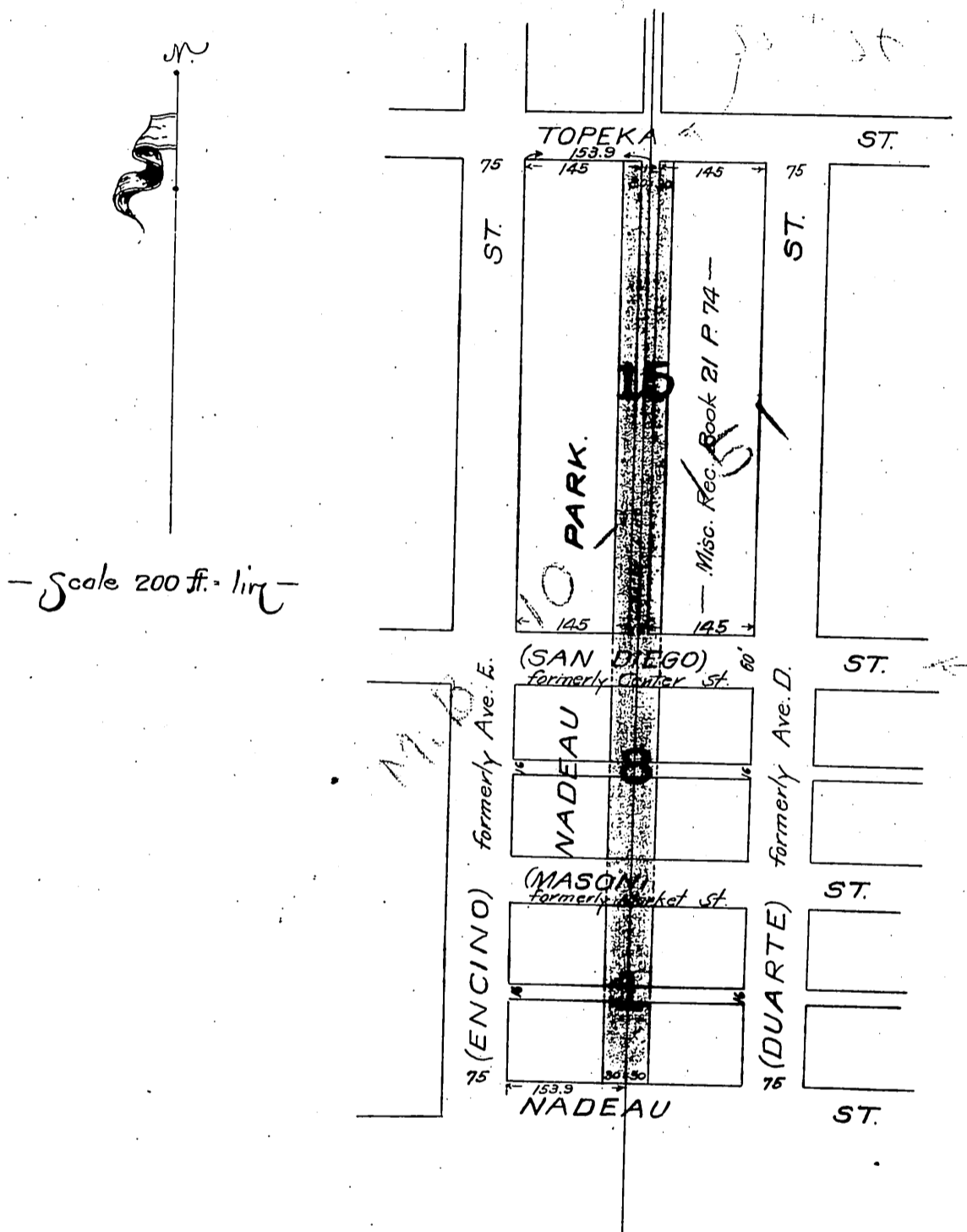


Nadeau Townsite Co  
- to -  
Pacific Electric Railway Co.



Por. of P.E.R/W to City of L.A. for Sewer Purp. - D:98-222, O.R. 1490-110.

- Recorded May 20-1904 -  
233/1.1.1-56.

Sit U.K. 17.40

Comp.  
H.C. 11