

DM 2044-272

272

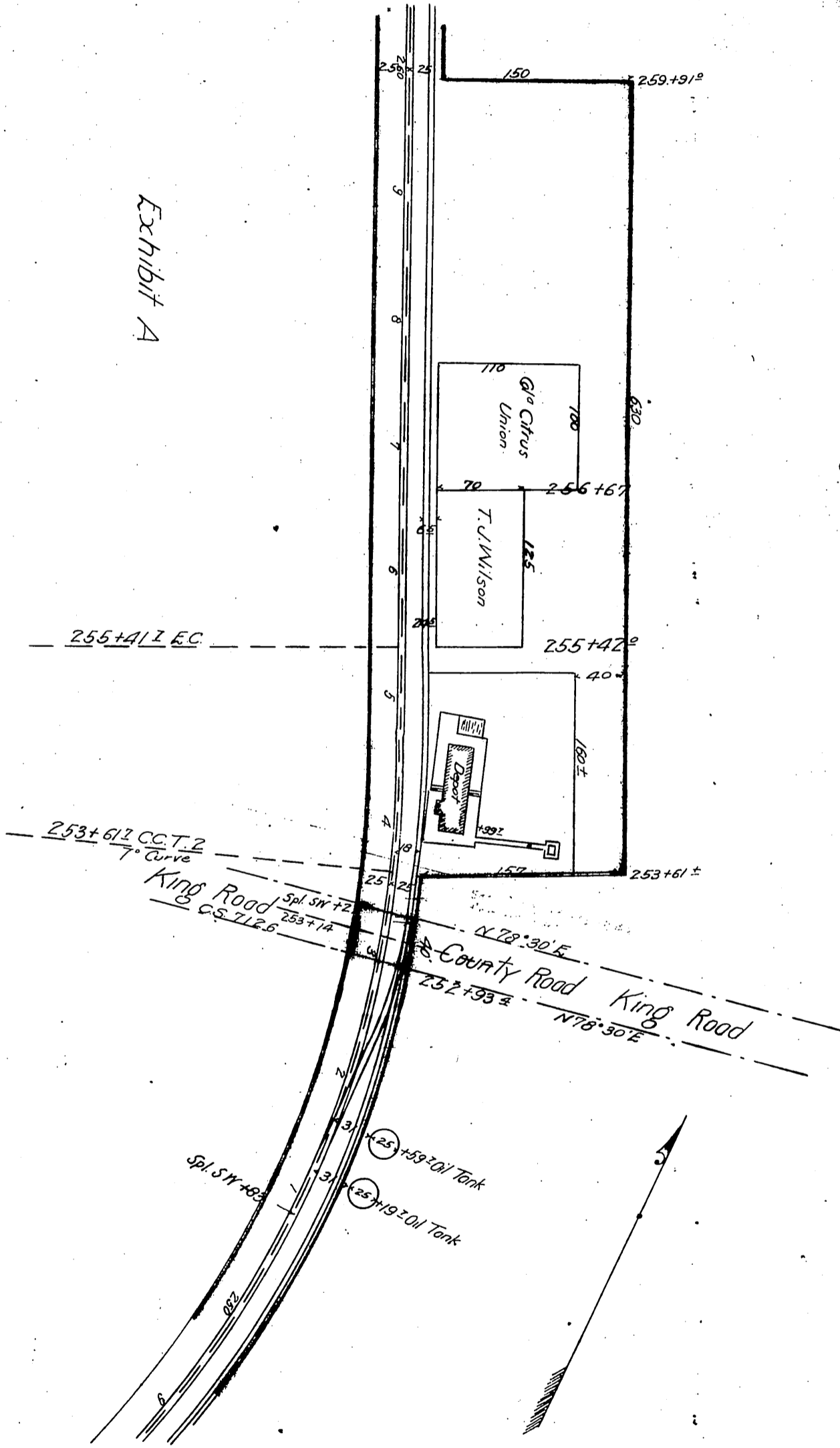
Southern Pacific Railroad Company
By J. Kruttschnitt, Second Vice President
and J. W. Willcutt, Secretary } to County of Los Angeles

Sheet 1

2511

A. 118 1/2

Exhibit A



Whittier
Evergreen St. Sta
Los Angeles Co
Scale 100=1"

Center St. (King Rd.) changed to Washington Blvd. - E. 49-12, Min. Bk. 249-365

Recorded June 7 1904

A. 118 1/2

Sheet 1

D-2044