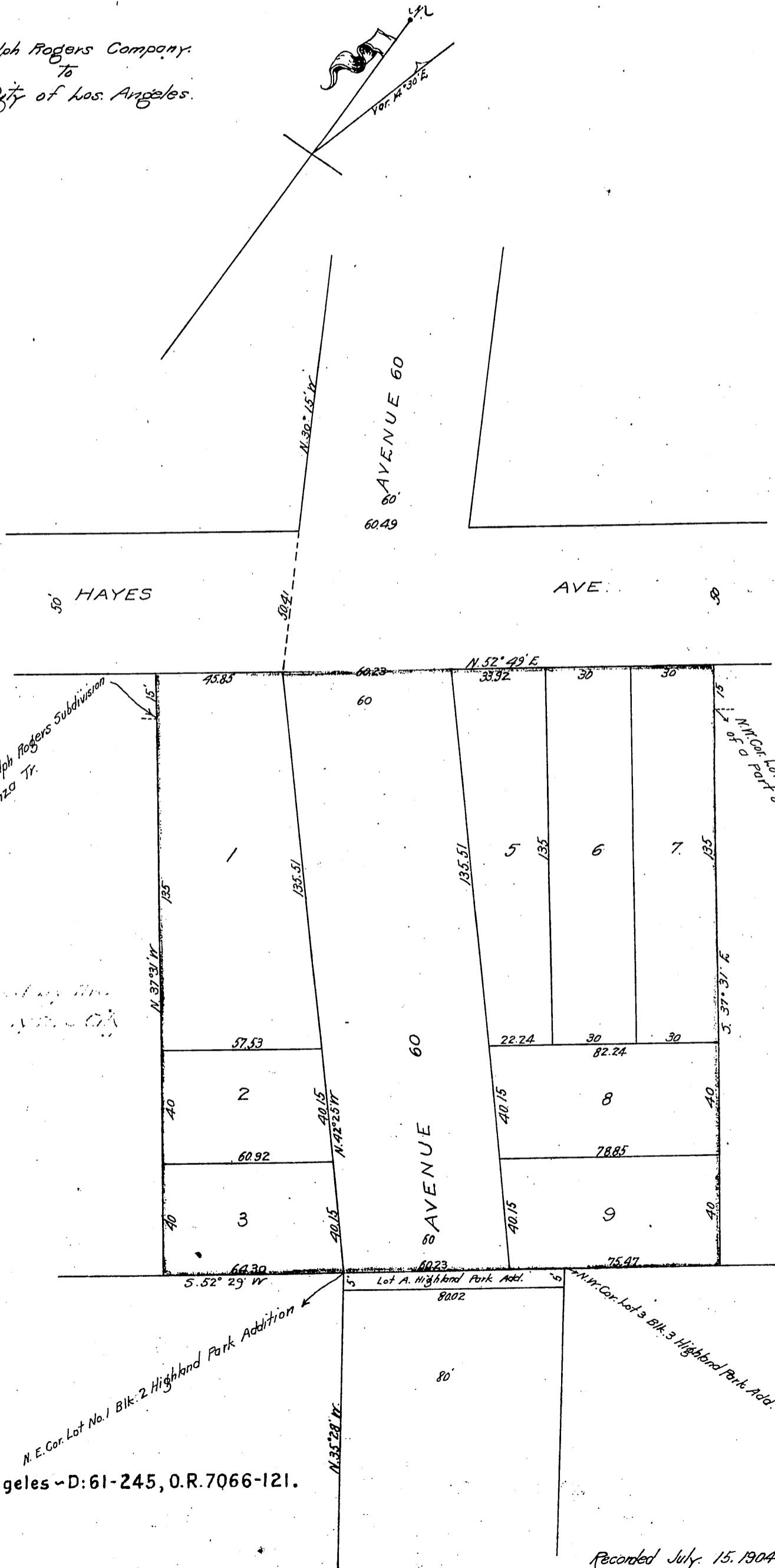


Map of
 RALPH ROGERS SUBDIVISION
 of Lots 15, 16, 17, and 18 of Block 55 in Ralph Rogers
 Subdivision of a part of the Garvanza Tract
 recorded in Miscellaneous Records, Book 12
 Page 61 Los Angeles County California Mar. 21, 1904
 John A. Moffat, Sur.
 Scale 40' = 1"

Ralph Rogers Company
 to
 City of Los Angeles



N. E. Cor. Lot 19 Blk 55 in Ralph Rogers Subdivision
 of a part of the Garvanza Tr.

N. E. Cor. Lot 14 Blk 55 in Ralph Rogers Sub.
 of a part of the Garvanza Tr.

This deed was not recorded by the
 Grantee nor recognized by the City
 at Los Angeles.

N. E. Cor. Lot No. 1 Blk. 2 Highland Park Addition

N. W. Cor. Lot 3 Blk. 3 Highland Park Add.

Lot 7 quitclaimed by City of Los Angeles - D: 61-245, O.R. 7066-121.

Recorded July 15, 1904.

A. & Sitt. O.K. A.A. 3/2