

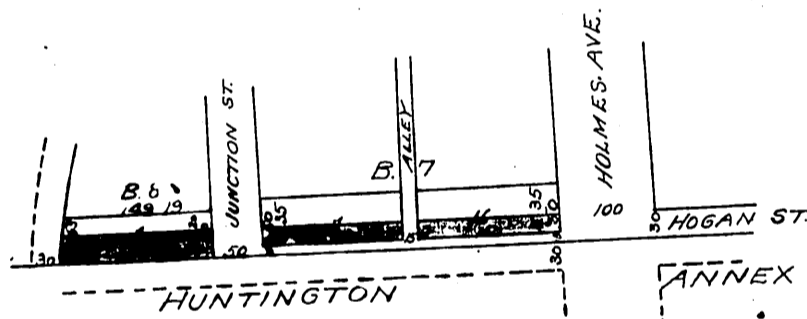
DM 2095-303

303

57

2 S 13
SH+6
A 93

Los Angeles Land Co.
to
County of Los Angeles.



Parcels conveyed colored Red ■

Map of Part Lots 1 & 16 B.7 and part Lot 1 B.8

of First Addⁿ to Huntington Park

as in Map Book 4 P. 40

Recorded Sep. 8. 1904.

See 115-115

190 Sit. & 7