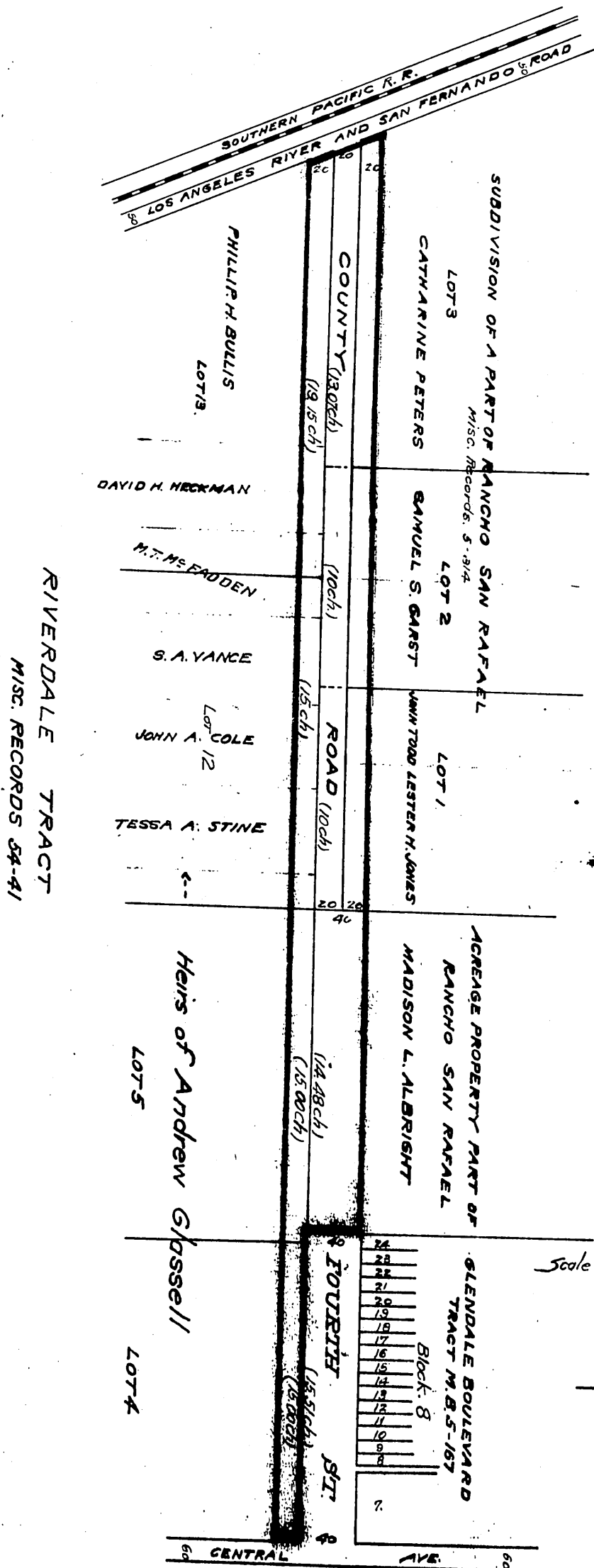


63

Catherine Peters.
 Phillip H. Bullis
 David H. Heckman
 John Todd
 S.S. Garst
 M. T. Mc Fadden
 Hugh Glassell
 Andrew Glassell
 Heirs Est. of Andrew Glassell Decd.
 M. L. Albright
 Lester H. Jones
 Tessa A. Stine
 John A. Cole
 S. A. Vance

County of Los Angeles.



RIVERDALE TRACT
MISC. RECORDS 54-41

Scale { Longitudinal 1" = 400 ft.
Cross Section 1" = 100 ft.

Recorded Nov. 12, 1904

For street name changes see D-30-45 Ord. 350

See D-3-201

Camp
H.C.G.