

DM 2104-26

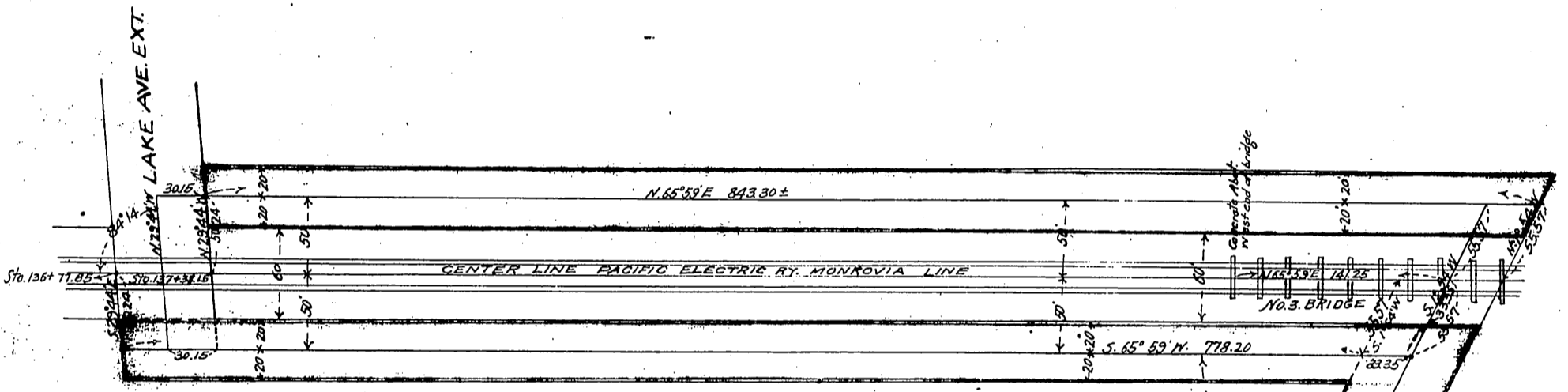
68

20

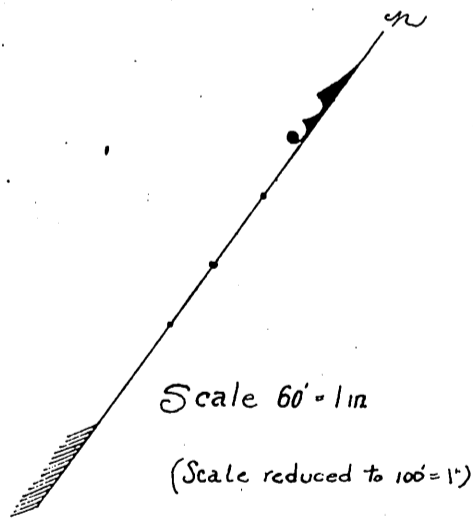
SH 7

1512

George S. Patton  
 Ruth W. Patton  
 By Geo S Patton her atty in fact } to County of Los Angeles  
 Annie Wilson  
 By Geo S. Patton her atty in fact }



Vic per Elthambric Road D:12-130



Yellow color shows boundaries of land to be deeded for Road Purposes

Post set by T.D. Allen April 1902  
 S.E. Corner of Cotti See Co.  
 Surveyor's Map No. 3391  
 Boundary Line between  
 Cooper & Patton Ranch  
 2x2 White stake 2' west of center  
 of Eucalyptus tree  
 S.W. Corner Cooper Ranch

Recorded Aug 13. 1904.

SH 7-1512

D:2104