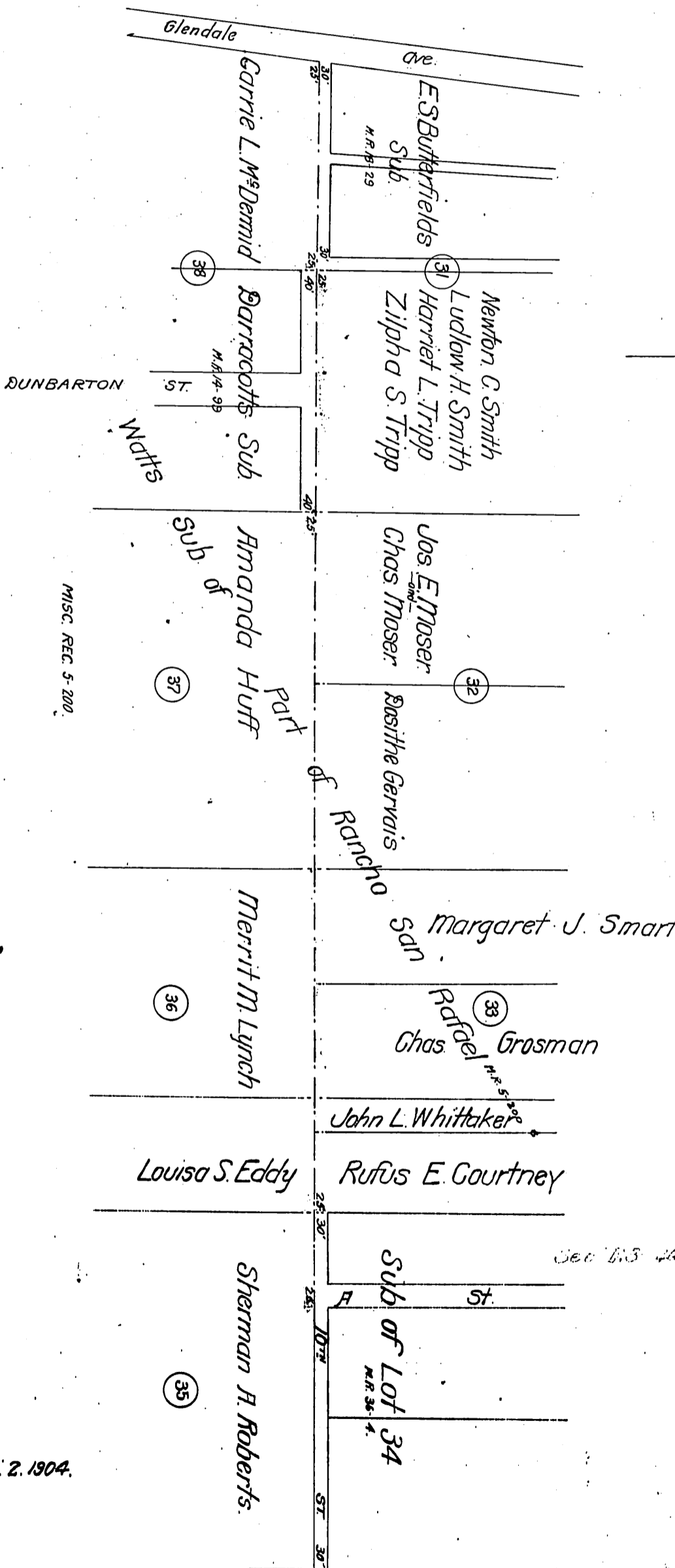


Chas. Grossman	Zilpha S. Tripp	} to County of Los Angeles
T.L. Whitaker	Chas. Moser	
Louise S. Eddy	J.E. Moser	
Sherman A. Roberts	Merritt M. Lynch	
D. Gervais	Rufus E. Courtney	
Amanda Huff	Hermine Grosman	
Newton C. Smith	C.L. McDermid	
Ludlow H. Smith	M.J. Smart	
Harriet L. Tripp		



Watts Subdivision
MISC. REC. 5-200

MISC. REC. 5-200

Recorded Dec. 2, 1904.