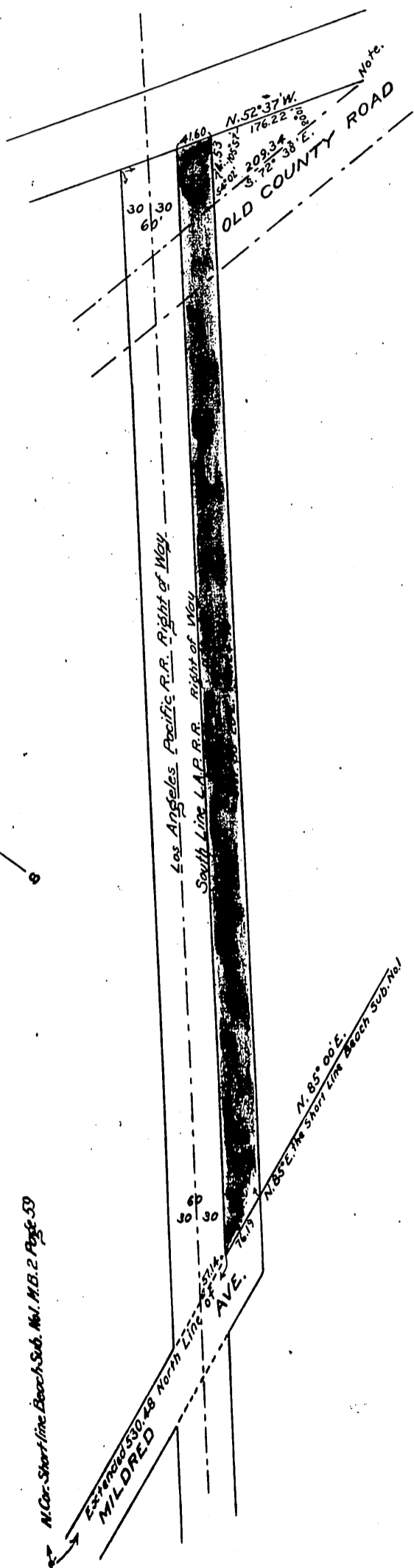
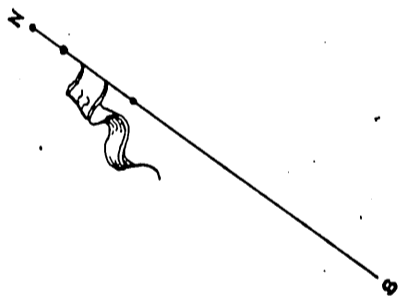


1. Abbot Kinney to
County of Los Angeles

F. D. Lanterman C.E. Sept. 14, 1904.

Scale 1/4" = 50'



Note: - S. 72° 38' E. 638.02 To Meander Line of Inner Bay.

Scale reduced to 1/80" = 1'

N. Cor. Start line Beach Sub. No. M.B. 2 Page 53

Recorded Oct. 12 1904.

D. 3 - 128

Virginia Ave. name established D. 53-57 Ord. 190

544 10 1110