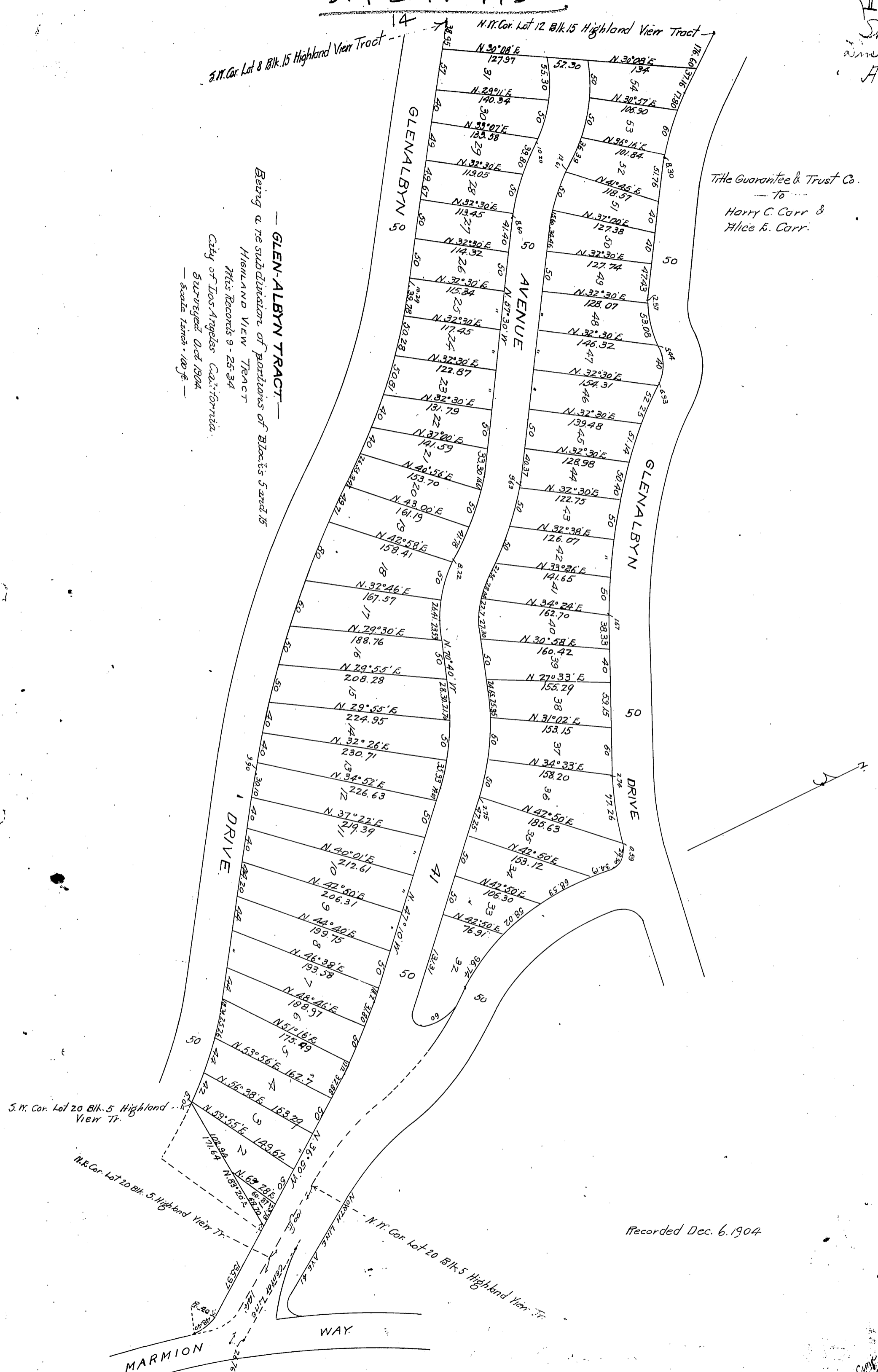


S.W. Cor. Lot 8 Blk. 15 Highland View Tract

N.W. Cor. Lot 12 Blk. 15 Highland View Tract

— GLEN-ALBYN TRACT —
Being a re-subdivision of portions of Blocks 5 and 15
Highland View Tract
This Records 9-25-34
City of Los Angeles California
Surveyed Oct 1904
Scale 1 inch = 100 ft.

Title Guarantee & Trust Co.
— to —
Harry C. Carr &
Alice E. Carr.



Recorded Dec. 6, 1904