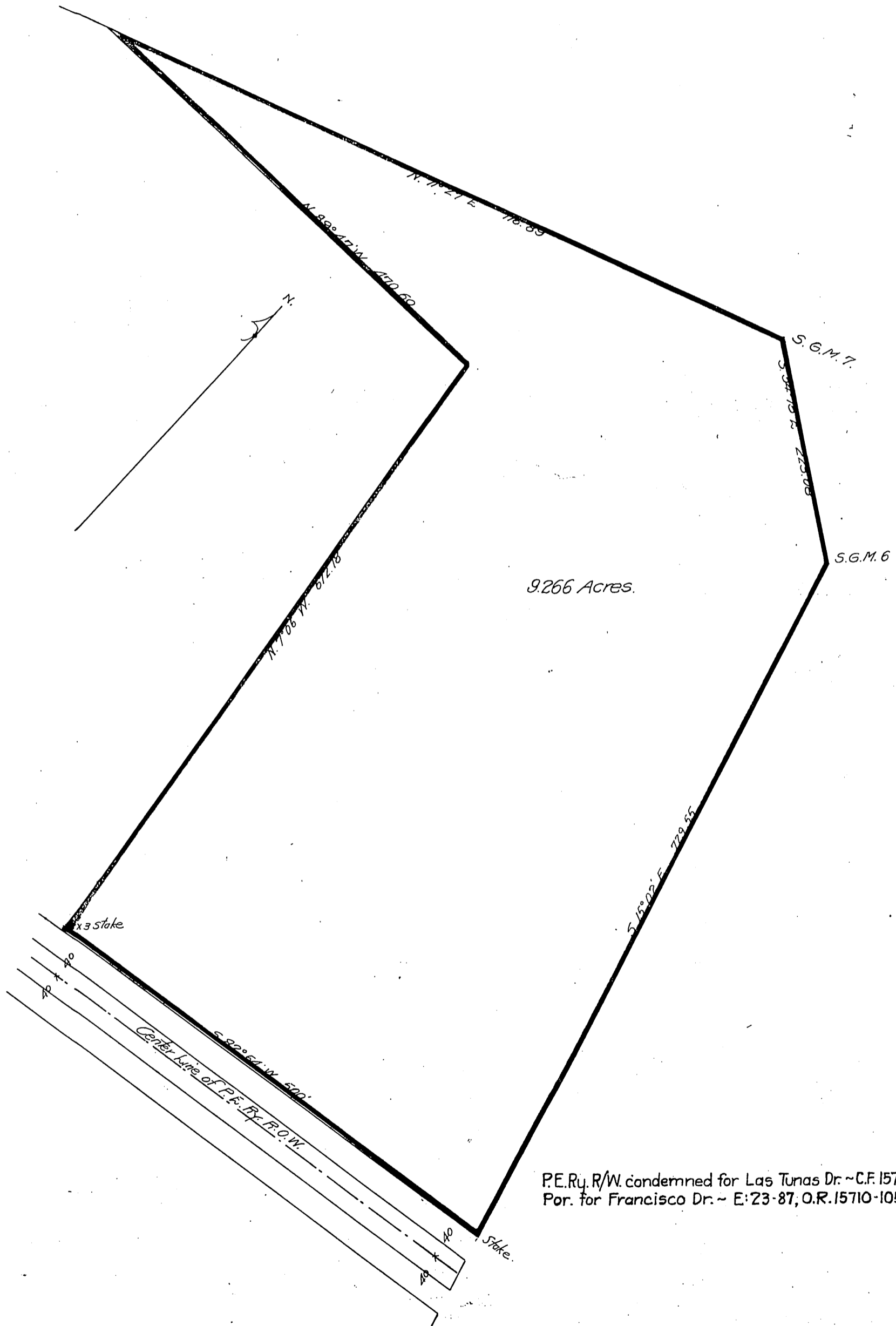


DM 2181-35  
16

35

Los Angeles Land Co.  
to  
San Gabriel Valley Country Club Association



P.E. Ry. R/W. condemned for Las Tunas Dr. ~ C.F. 1574  
Por. for Francisco Dr. ~ E: 23-87, O.R. 15710-105

Recorded Nov. 15. 1904

Camp  
A.C.F.