

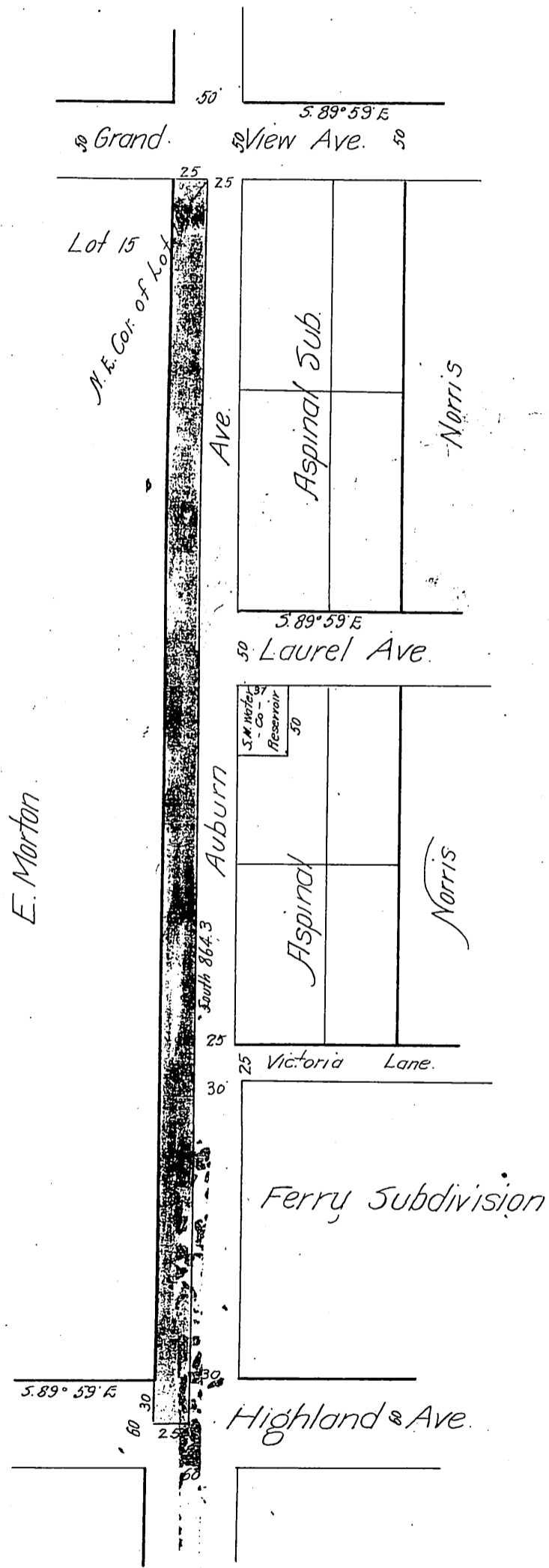
DM 2181-143

14

17

17 Map of
A parcel of land dedicated for
a road by E. M. Orton to Los Angeles County
California
being a portion of Lot 15 Sierra Madre
Tract of said County and State.
Scale 100ft. = 1 inch.
December 1904

Ellen M. Orton
to
County of Los Angeles.



Recorded Dec. 10. 1904

SH 13 H 66

Lomp
RCS