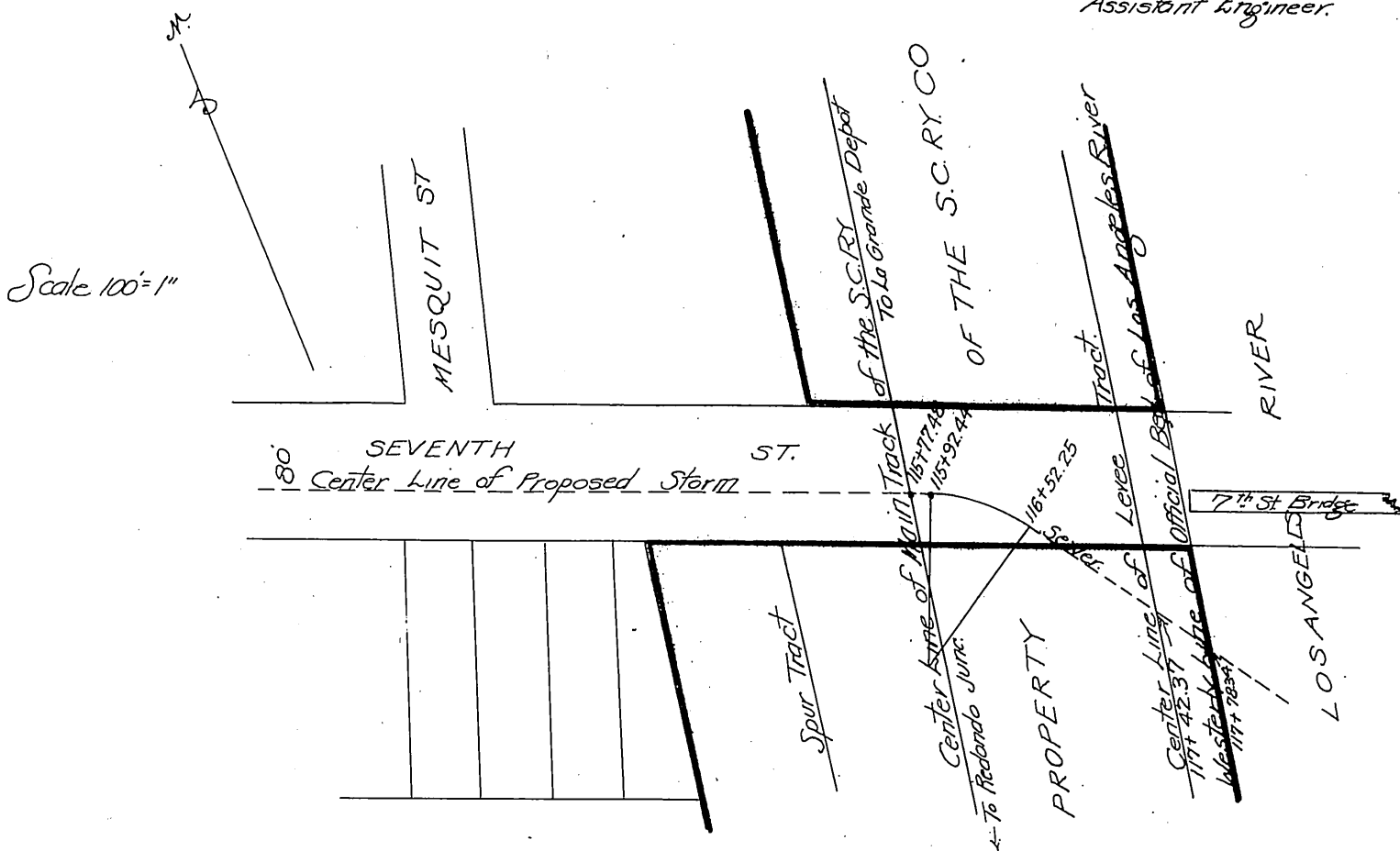


Southern California Railway Company  
to  
City of Los Angeles

Exhibit "A"  
Attached to Contract between Southern California Ry. Co and  
City of Los Angeles  
Los Angeles Cal. October 6<sup>th</sup> 1904 Revised Dec. 12<sup>th</sup> 1904  
R. B. Burns Chief Engineer

Correct as to description  
O. P. Ferrass  
Assistant Engineer.



Description :- Center line of proposed Storm Sewer shown by a dotted line  
Southern California Ry. Co's property enclosed in yellow

Drawing No 76-5664

Recorded Jan 20 1905

AOK Sht OK

Comp. E. J. H. P.