

Frank B. Harbert } to W^m Holgate
E. S. Butterworth }

Plat of
Harbert and Butterworth's Tract

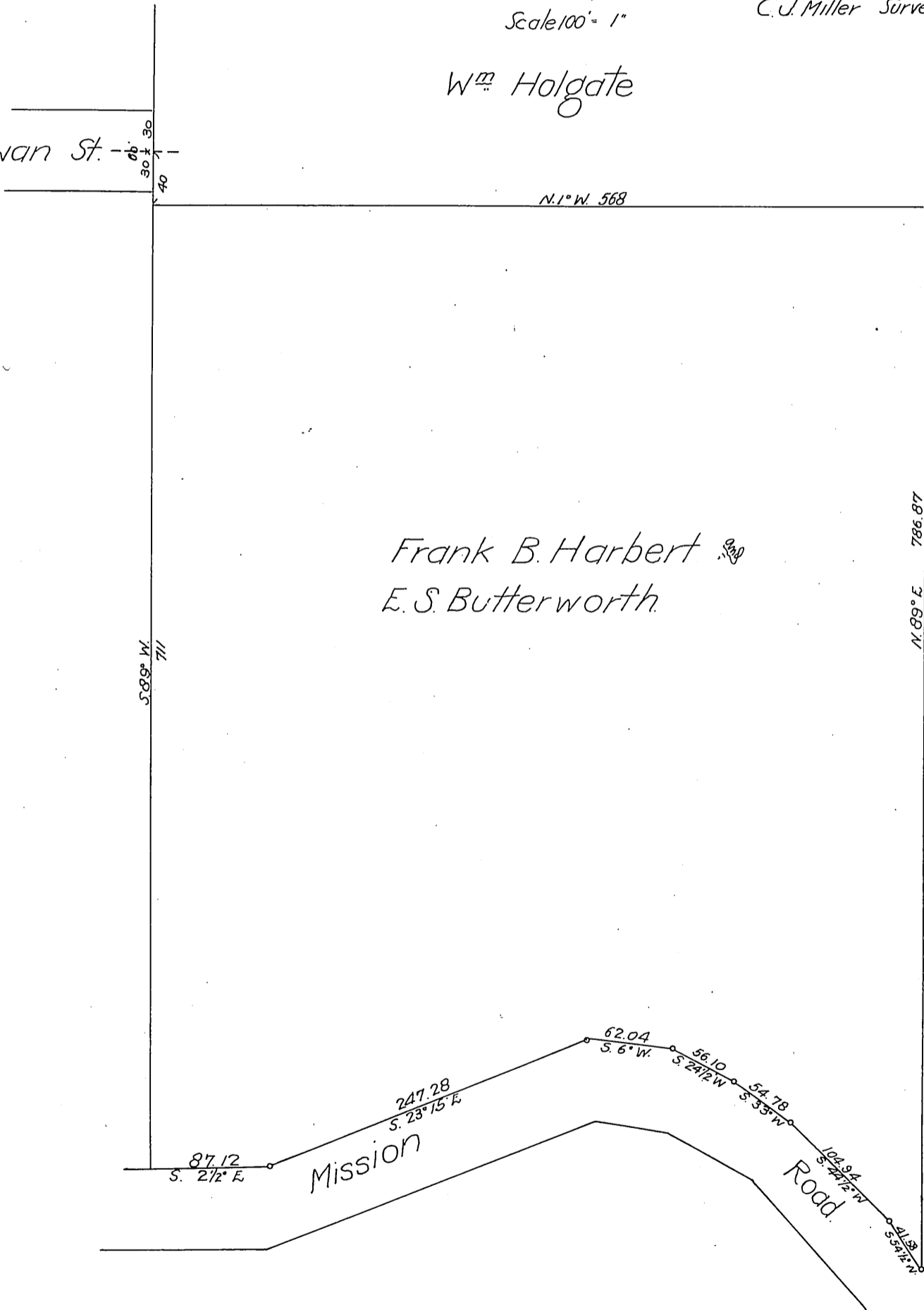
on Downey Ave.

Scale 100' = 1"

C. J. Miller Surveyor.

W^m Holgate

Rowan St.



Frank B. Harbert
E. S. Butterworth

Downey Ave.

Recorded Feb. 8. 1905.

(SEE M. E. 6 166)

577-814-0

Copy
P. C.