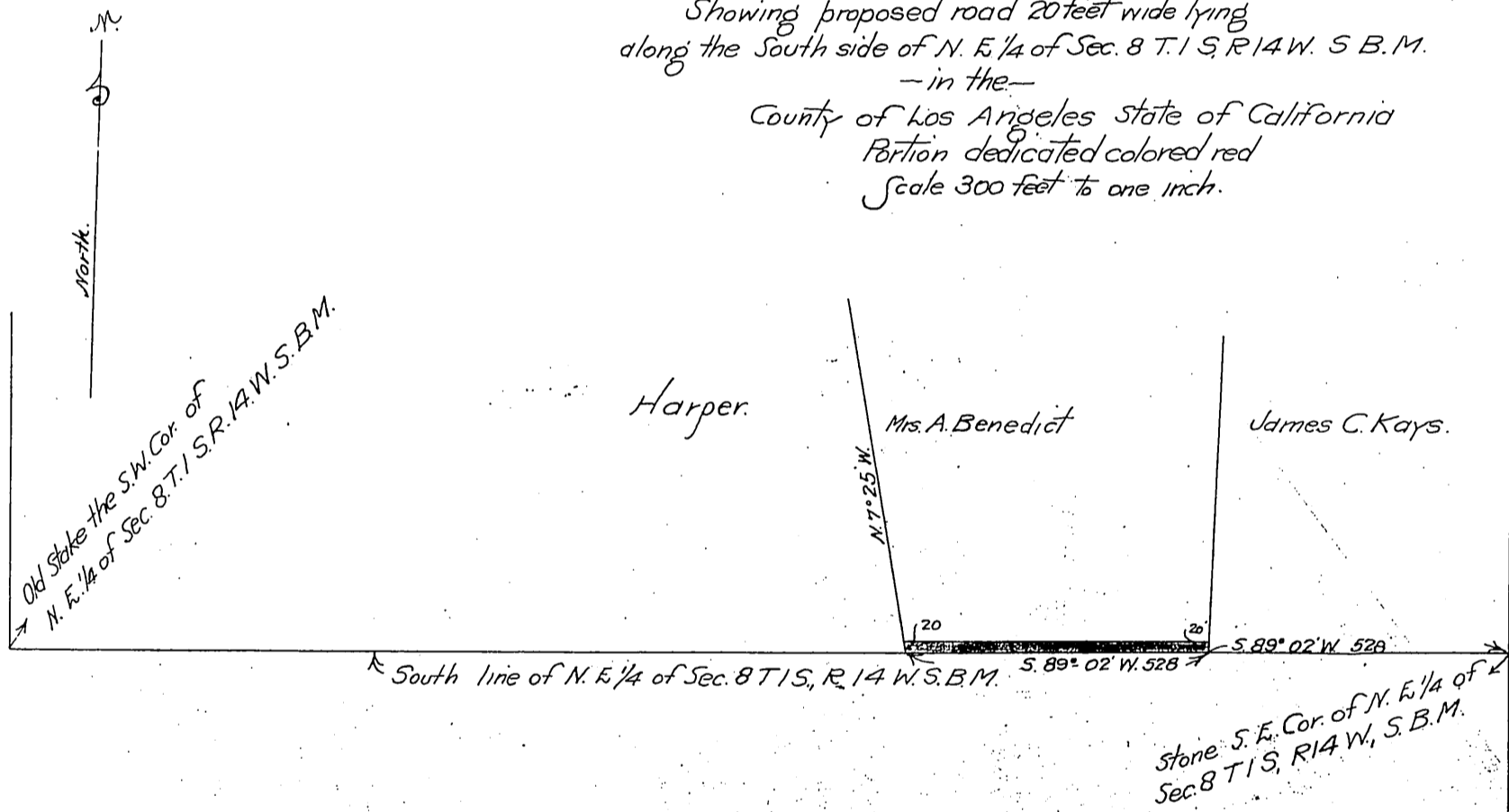


48

Mrs. A. Benedict
-- 16 --
County of Los Angeles.

-MAP-
Showing proposed road 20 feet wide lying
along the South side of N. E. 1/4 of Sec. 8 T. 1 S. R. 14 W. S. B. M.
- in the -
County of Los Angeles State of California
Portion dedicated colored red
Scale 300 feet to one inch.



Recorded Feb. 4, 1905

See II:3-207