

DM 2253-34

66

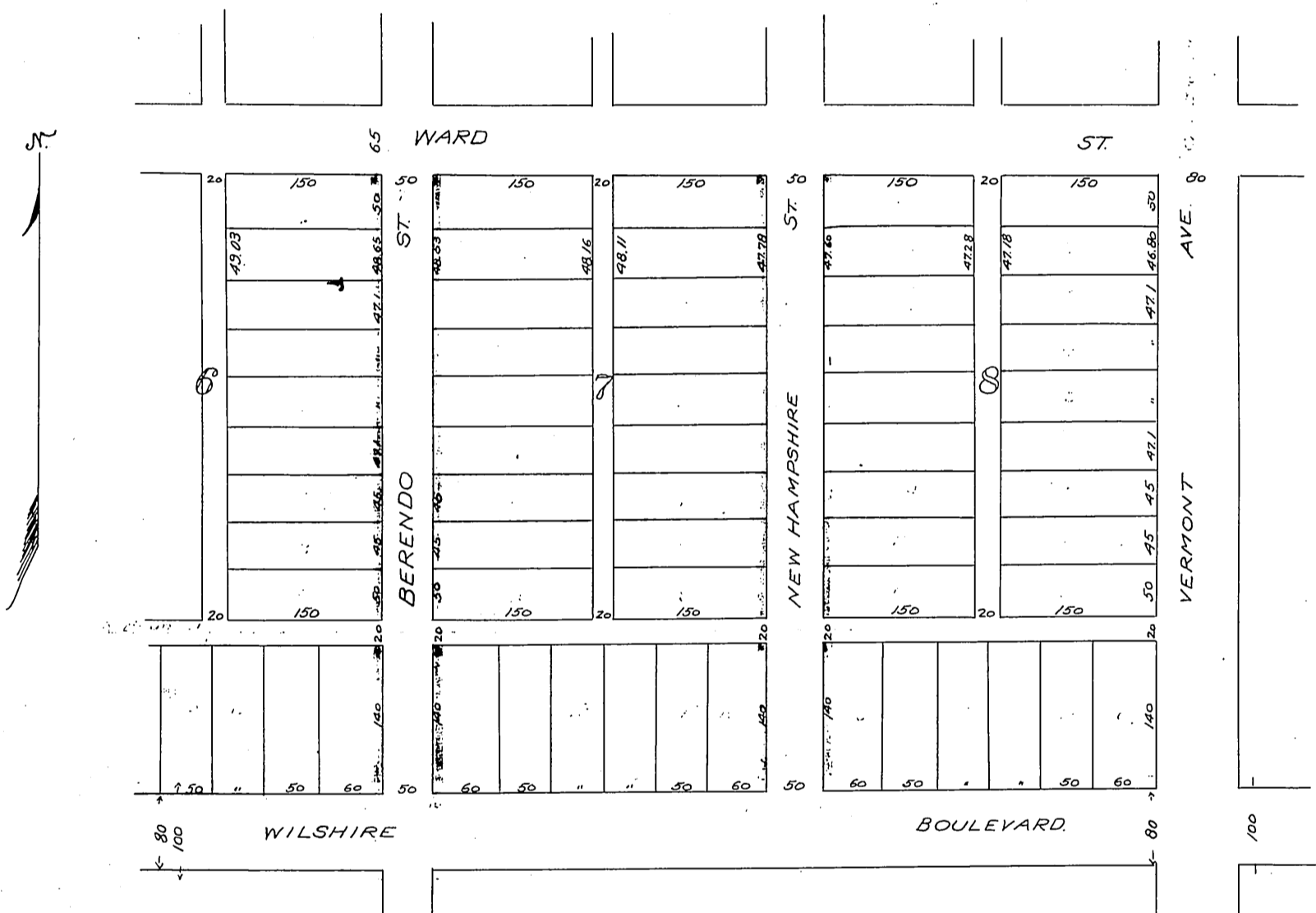
34

Edward Schmidt  
 Harriet Schmidt  
 Stella Schmidt  
 William W. Mines  
 Title Insurance & Trust Company } to County of Los Angeles.

- MAP -  
 Showing a portion of the  
 COPENHAGEN TRACT.

- Mis. Rec. 70-17 -

Note: - By this Deed only those portions shown by colored lines which lie North of the City Boundary line are dedicated in the County of Los Angeles.



Recorded Feb. 25 1905

311.7 7.84.

Comp.  
H.C.