

Martin Grimaud
Marie Grimaud
Ernest Fleur
Marie Fleur

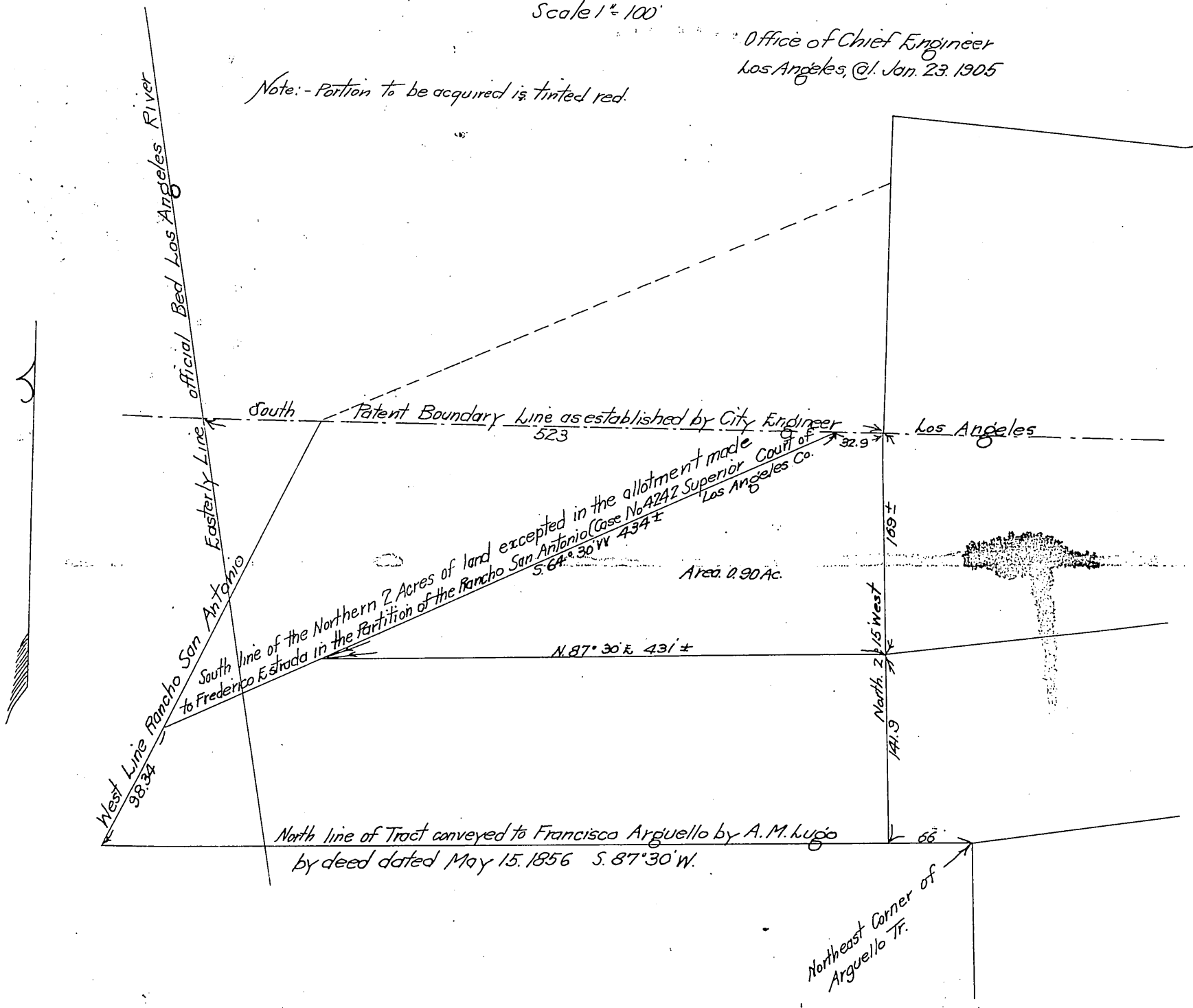
to S.P.L.A. & S.L.R.R.C.

S.P.L.A. & S.L.R.R.
Map showing tract of land to be acquired from Mar-
tin Grimaud & Ernest Fleur near South Patent -
Boundary Line City of Los Angeles, Los Angeles
County @l.

Scale 1" = 100'

Office of Chief Engineer
Los Angeles @l. Jan. 23, 1905

Note: - Portion to be acquired is tinted red.



Recorded Mar. 22, 1905.

Vol. No. 505-1116

Checked 26-26-05