

North

N. 0° 05 1/2' W. 1240.55
 Center Line County Surveyors Map # 7120 N. 0° 05 1/2' W. 1320.55
 AMPARA AVENUE

S. 89° 25 1/2' E

Mary Agnes Harris
 to
 City of Hollywood.

Map of
 Ampara Avenue
 in the
 City of Hollywood County of Los Angeles
 California
 V. J. Rowan Surveyor February 1905
 Scale 100 feet to one inch
 True Courses Var. 14° 30' East
 Part to be dedicated colored red

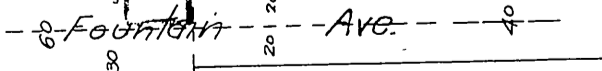
M. A. LEWIS

All of the streets, roads, alleys and highways shown and delineated on this map and thereby offered for dedication as public streets, roads, alleys and highways, excepting such as have heretofore been dedicated and accepted on behalf of the public, are hereby accepted as public streets, roads, alleys and highways on behalf of the public by the Board of Trustees of the City of Hollywood, provided that nothing herein contained shall be construed as an acceptance of any improvements made in or upon any street, road, alley or highway shown or delineated upon this map.

Dated the day of
 190
 By Order of the Board of Trustees of the City of Hollywood

George H. Dunlop.
 City Clerk pro tem.

See E. 6-51



copy H.C.T.