

88 Known as

HOLLENBECK PARK TRACT NO 2

(See D:2285-49)

J. N. Gibson
- 6 -
Anna N. Gibson.

609 60
110 60
174 60

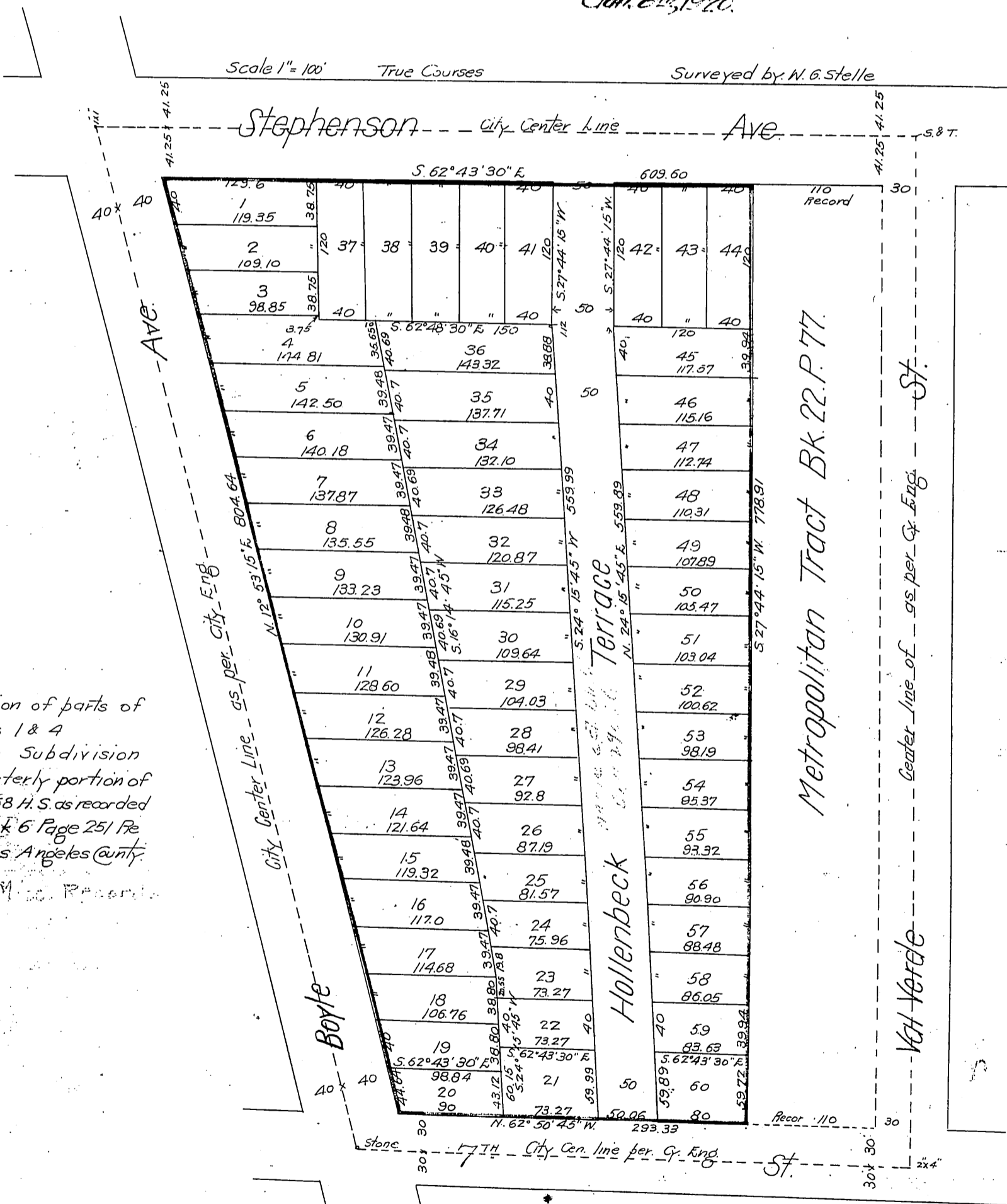
Note:-

The narrative not entitled "An act to cure defects in maps or plats filed for record prior to January 1st, 1917, xxxxx" (1917 Statutes and Amendments, Chapter 190 page 1153) applies to this map and makes it a legal subdivision.

For similar case see St. John's Sub. M.R. 196-306 & 307 and the County Councils opinion regarding same.

County Surveyor
Jan. 8th, 1920.

Scale 1" = 100' True Courses Surveyed by N. G. Stelle



A subdivision of parts of lots 1 & 4 C.W. Davis Subdivision of the Easterly portion of lot 1 Block 58 H. S. as recorded in Map Book 6 Page 251 Records of Los Angeles County.

For Hollenbeck Terrace See D:5673-80 D:20-55
Recorded Apr. 3-1905.

Hollenbeck Ter. changed to Hollins St. - ord. 36813
Stephenson Ave chg. to Whittier Blvd. - Ord. 43128.
For lot 1 for street purposes - D. 98-16, O.R. 12681-155.

Comp. H. H. J.