

M. W. Wicks - to - Mary C. Wilhoit

Por. Cove Av. changed to Fair Oak View Terr. Ord. 47700

Map of

North Edendale Tract

Being a subdivision of a portion of Fractional Lot

8 of the Los Angeles Canal and Reservoir Co's

Resubdivision of Hancock's Survey of block 31

as recorded in Book 2 at pages 209-210

and 211 of miscellaneous records of

Los Angeles County State of California

Surveyed by R.G. Miller C.E.

True Courses

Scale 100' = 1"

N.B. Distances given on curved streets are arc distances

M. E. Gr. Montrose Tract

Proprietor - M. R. Wicks

Allesandro St. C.S. 8071

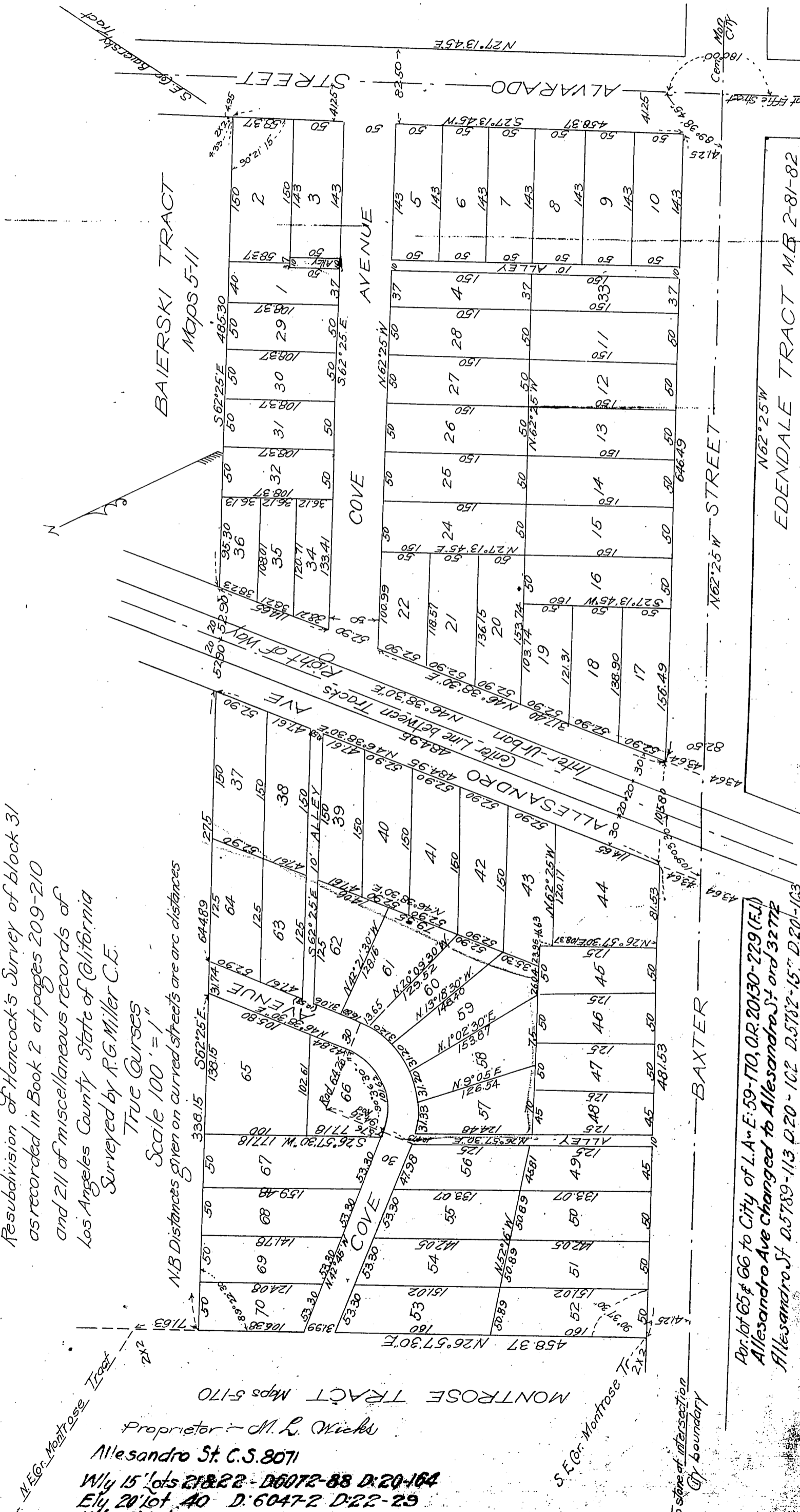
W/ly 15' lots 218-22 - D:6072-88 D:20-164

E/ly 20' lot 40 D:6047-2 D:22-29

W/ly 15' lot 34 D:5231-105 D:20-212

" " lots 178-18 D:5203-149 D:20-212

Recorded May 31, 1905 Plat 2



EDENDALE TRACT MB 2-81-82

FOR ALLESANDRO ST. SEE ORD. 25670 (D:566C-129 D:20-51)
" " (D:5214-255 D:16-215)
" " (D:5191-241 D:5223-251 D:5207-304 D:5245-50
D:5214-254 D:16-216+217) D:5578-206 D:20-38)

Por. lot 65 & 66 to City of L.A. E:59-170, O.R. 20130-229 (E.U.)
Allesandro Ave changed to Allesandro St. Ord 32772
Allesandro St. D:5789-113 D:20-102 D:5782-157 D:20-103
Por. lot 35 condemned by City See D:11-245 D:3843-3
Deed to City Streets & Alleys See D:4010-44 D:11-272
For Allesandro St. See D:11-245 D:3843-3
D:5789-113 D:20-102 D:5782-157 D:20-103

City Boundary