

DM 2302 - 265

96

Adalaida Salgado  
to  
S.P.L.A. & S.L.R.R.

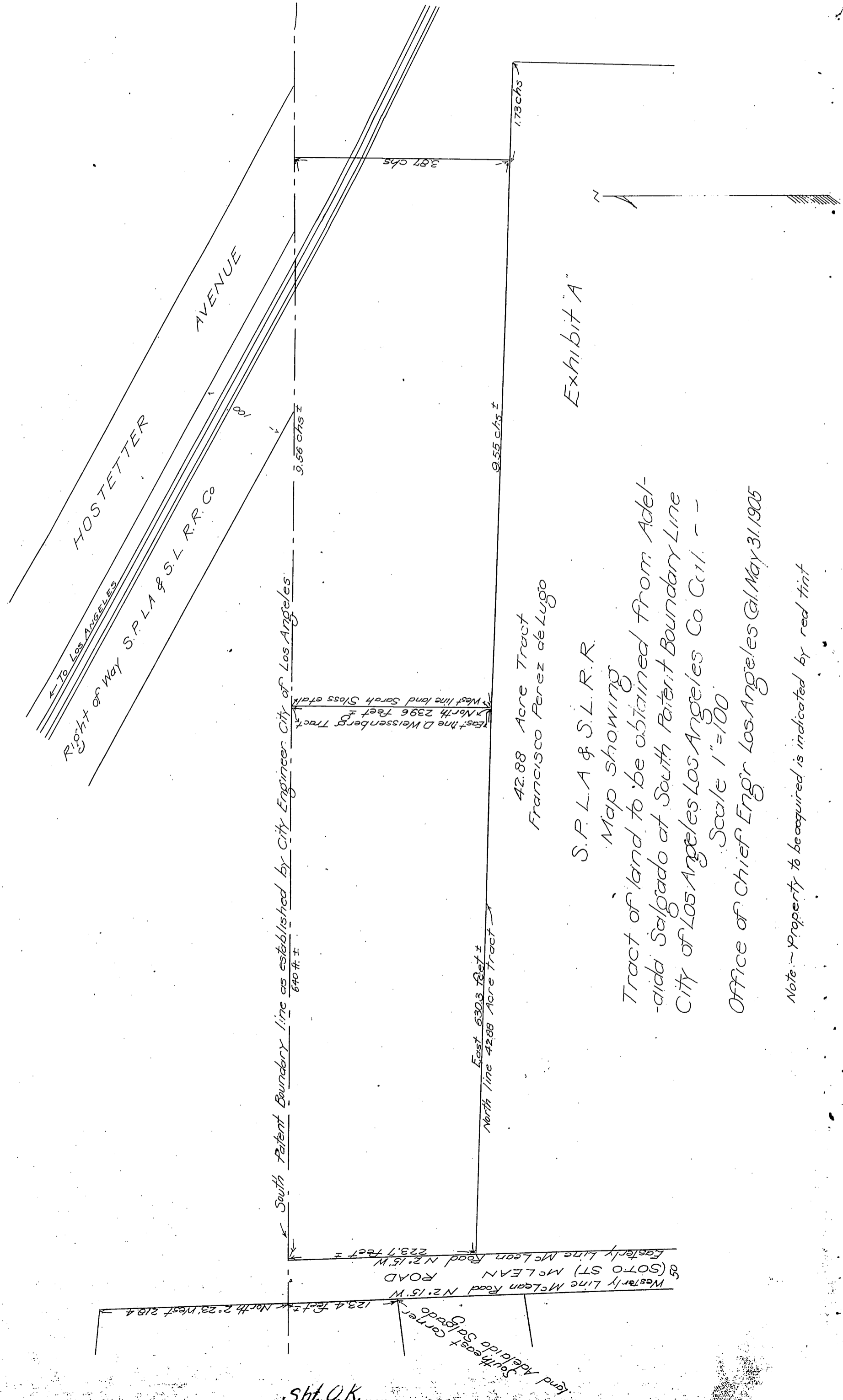


Exhibit "A"

42.88 Acre Tract  
Francisco Perez de Lugo

S.P.L.A. & S.L.R.R.

Map showing

Tract of land to be obtained from Adalaida Salgado at South Patent Boundary Line City of Los Angeles Los Angeles Co Cal. - -

Scale 1" = 100'

Office of Chief Engr Los Angeles Cal. May 31, 1905

Note: Property to be acquired is indicated by red tint

Sht. O.K.