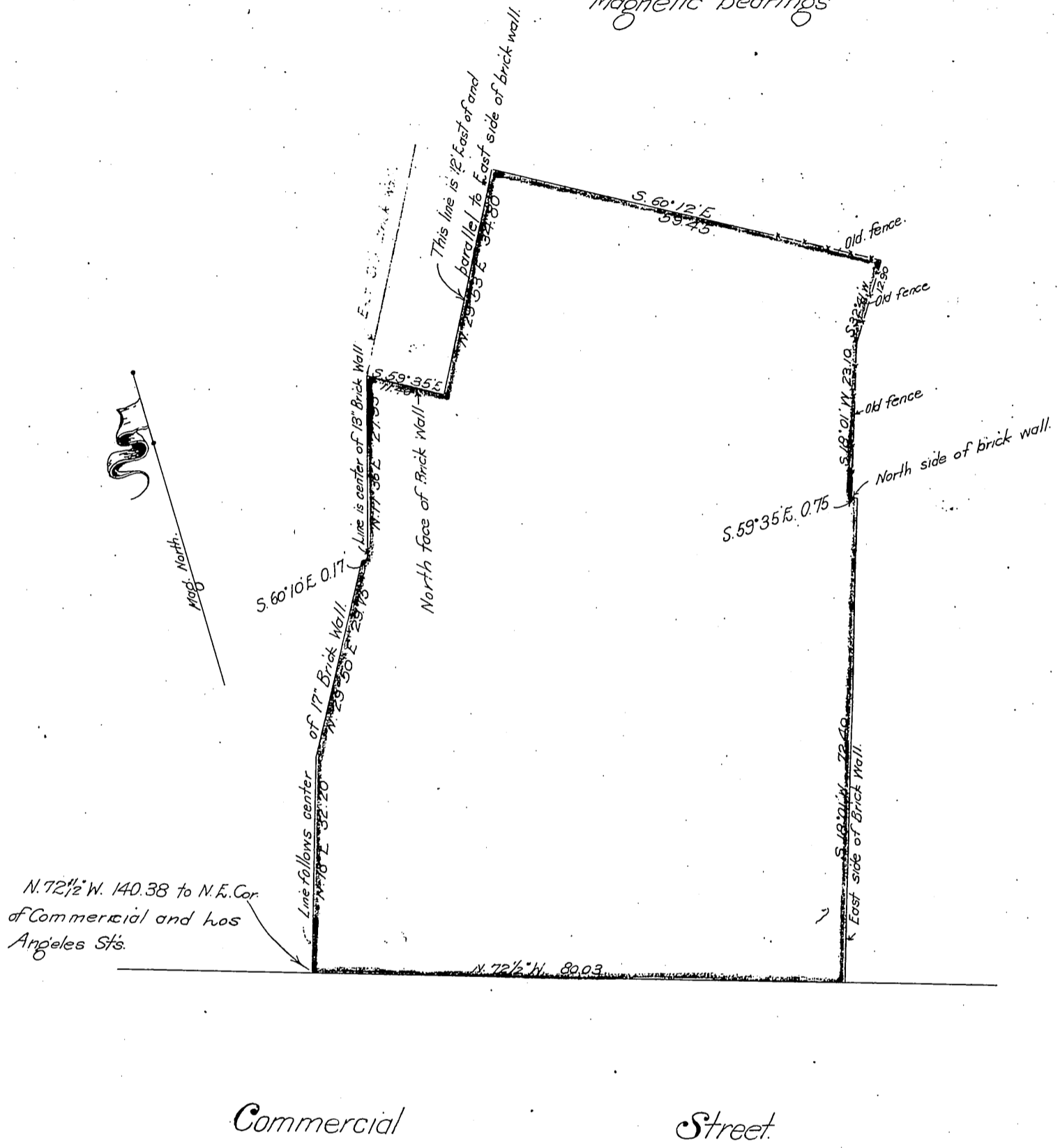


2

Edward M^c Laughlin }
Adelia M^c Laughlin } to { Andrew Cardinali
Alfonse Vandendaele

MAP
of a portion of the
M^c Laughlin Property
in the
City of Los Angeles, County of Los Angeles
California
Scale 20 feet to the inch
Magnetic bearings



N. 72 1/2° W. 140.38 to N.E. Cor. of Commercial and Los Angeles Sts.

Recorded May 10, 1905