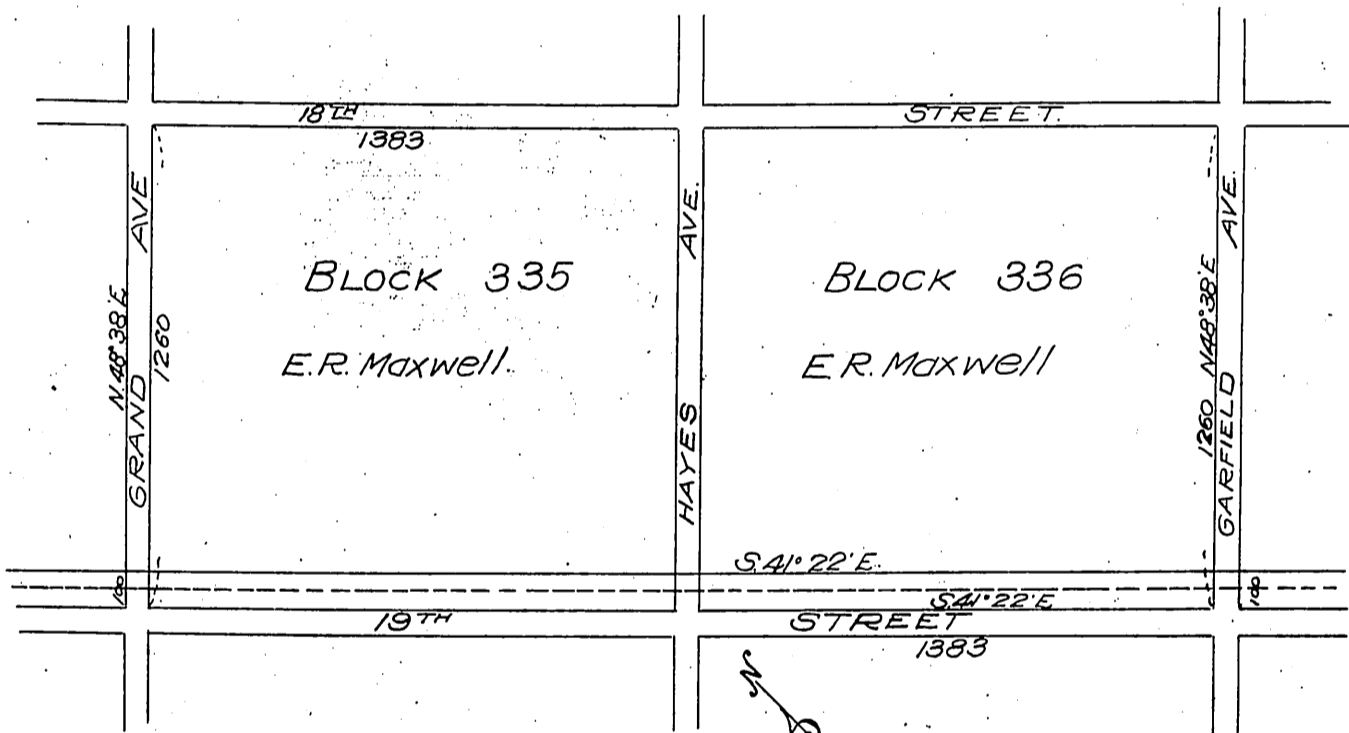


DM 2325-17

22

E.R. Maxwell
to
The Edison Electric Co.



Maclay Rancho Subdivision.
Ex Mission of San Fernando.
Right of Way map for Kern River Pole Trans-
mission Line
The Edison Electric Co.
Scale 500' = 1"

Recorded June 5, 1905
See M. 34-13

Comp. E. C. H.