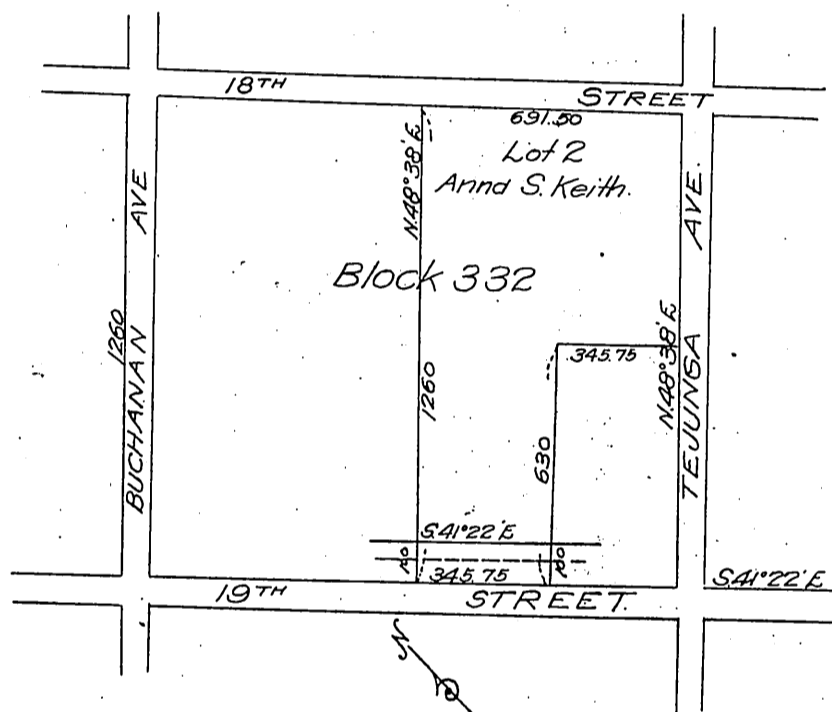


DM 2325-19

23

19

Emma S. Keith
to
The Edison Electric Co.



Maclay Rancho Subdivision
Ex Mission of San Fernando.
Right of Way map for Kern River Pole Transmission Line
The Edison Electric Co
Scale 500' = 1"

Recorded June 5, 1905
See 111:34-13

Comp. E. J. H.