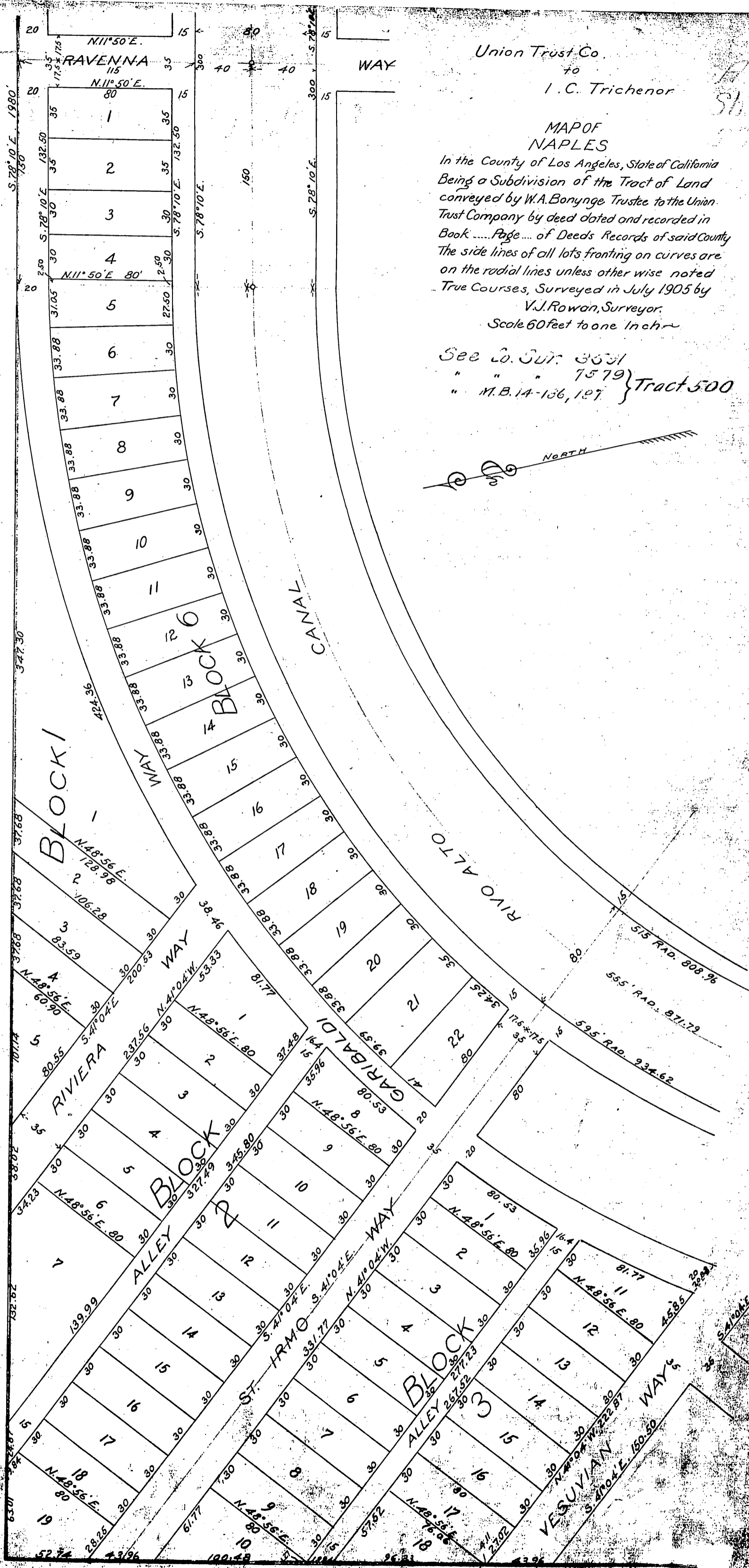


DM 2334-267

42

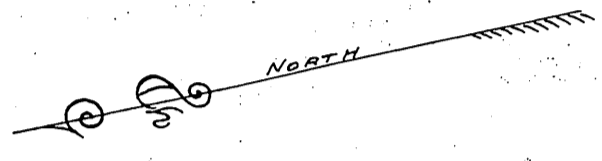
26



Union Trust Co.
to
I. C. Trichenor

MAP OF
NAPLES
In the County of Los Angeles, State of California
Being a Subdivision of the Tract of Land
conveyed by W.A. Bonyng Trustee to the Union
Trust Company by deed dated and recorded in
Book Page of Deeds Records of said County
The side lines of all lots fronting on curves are
on the radial lines unless otherwise noted
True Courses, Surveyed in July 1905 by
V.J. Rowan, Surveyor.
Scale 60 feet to one Inch

See L.O. Sur. 3531
" " " 7579 } Tract 500
" M.B. 14-166, 167



See map 2334-267