

DM 2367-289

289

W.J. Hole and Mary B. Hole
to
C.G. Warner.

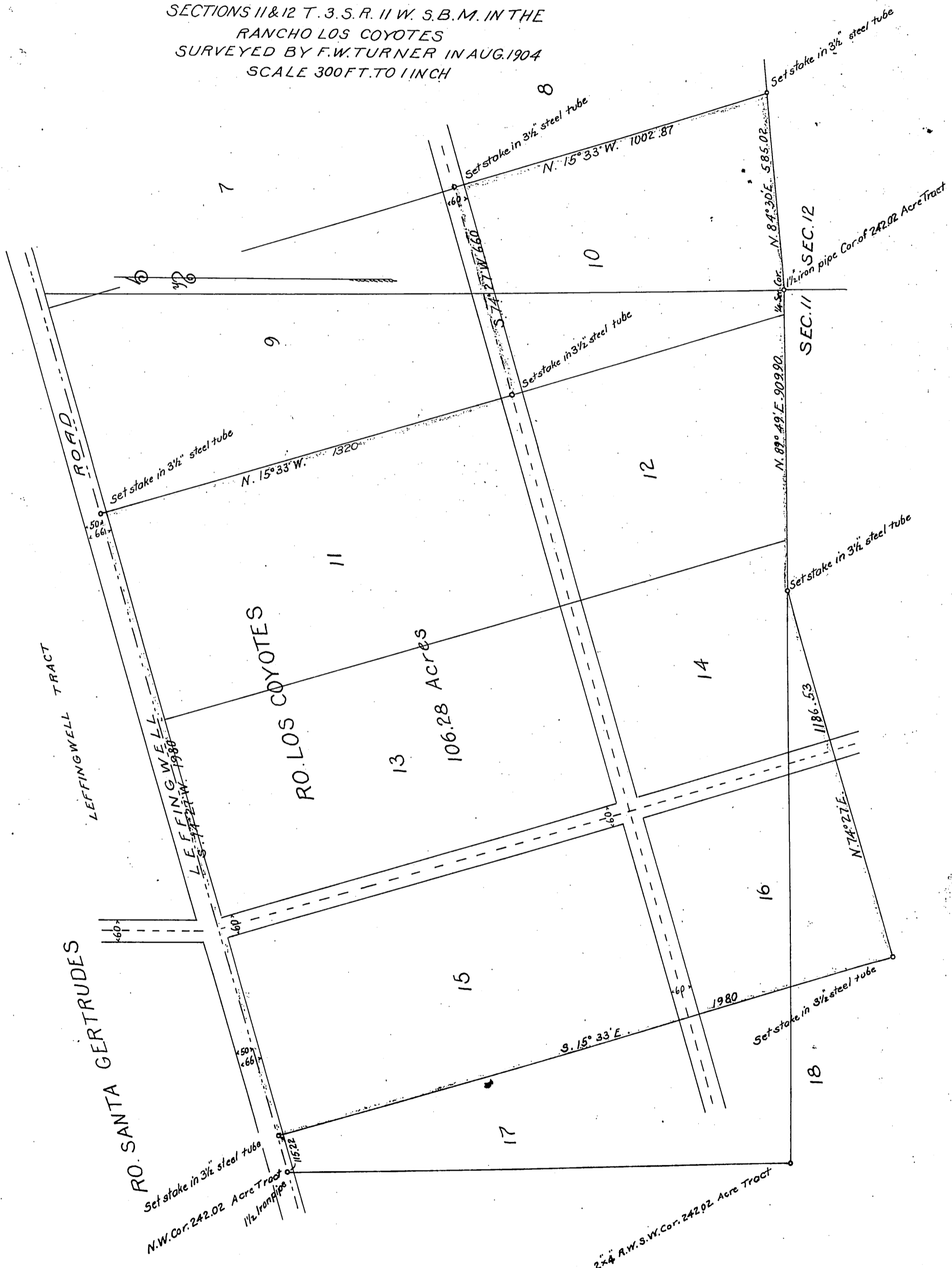
65

3811

F117

MAP OF A PART OF
SECTIONS 11 & 12 T. 3. S. R. 11 W. S. B. M. IN THE
RANCHO LOS COYOTES
SURVEYED BY F.W. TURNER IN AUG. 1904
SCALE 300 FT. TO 1 INCH

NUT LANDS



Recorded Aug. 22. 1905

Sharon M. 3-1-07

D.2367